

HANOVER. VHT-012

Traditional



SPECIFICATIONS

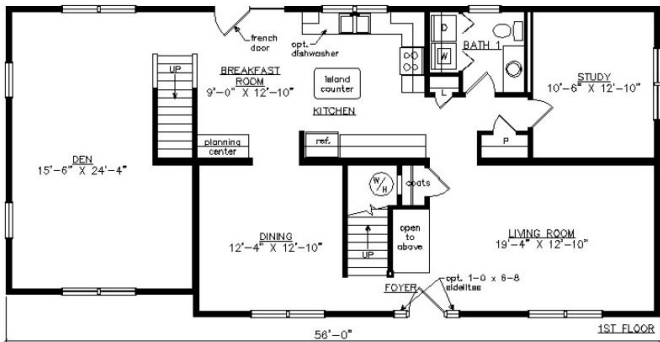
SQ. FT.	2592
BEDROOMS:	3
BATHROOMS:	2.5
LEVELS:	2

OPTIONAL FEATURES

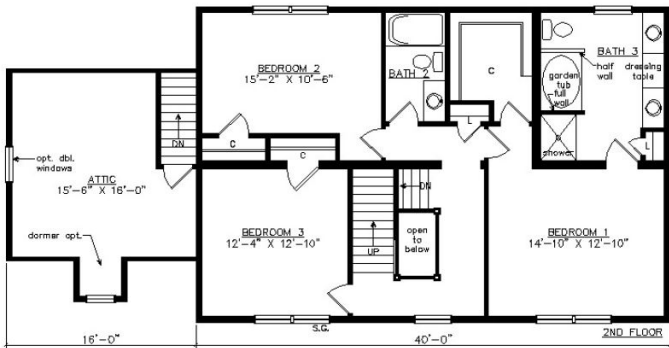
- ☒ Green Certification
- ☒ Energy Star

Shown with optional on-site built porch, door sidelites, 12/12 roof pitch, and fanlite door.

FIRST FLOOR



SECOND FLOOR



YOUR
NEW HOME
CONSULTANT



Hi, I'm Justin Bryant, your personal Modular Home Consultant

I would be happy to help you with any questions you may have. You can contact me on my direct number at **(877) 410-6334** or email me at justin.bryant@impresamodular.com.