

FAIRFAX II. VHT-009

Traditional



SPECIFICATIONS

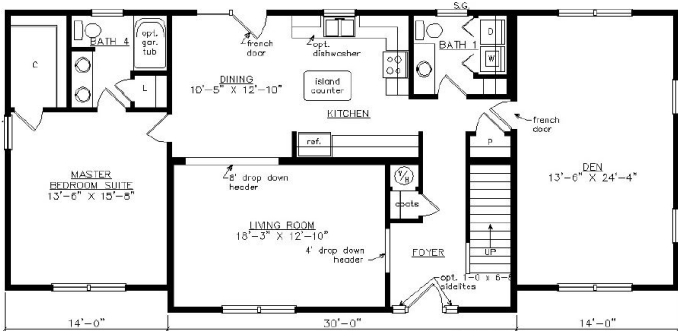
SQ. FT.	1995
BEDROOMS:	4
BATHROOMS:	3.5
LEVELS:	2

OPTIONAL FEATURES

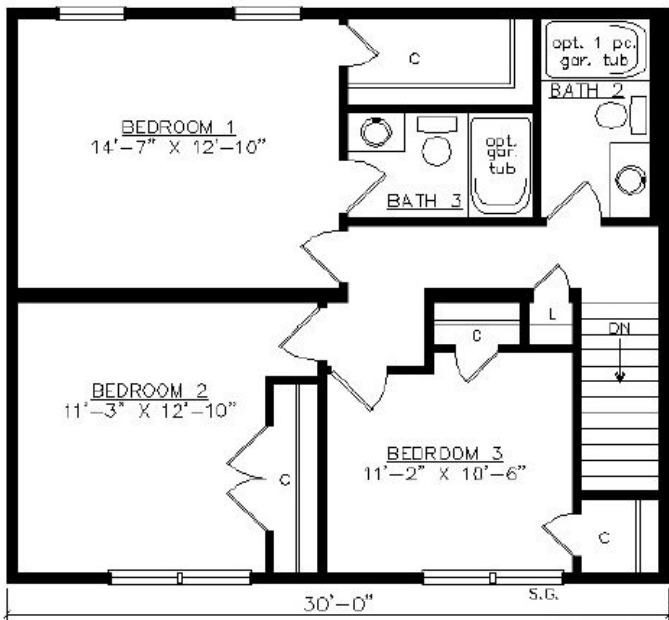
- ☒ Green Certification
- ☒ Energy Star

Shown with optional on-site built porch, fanlite door, door sidelites, 12/12 roof pitch and dormers.

FIRST FLOOR



SECOND FLOOR





Hi, I'm , your personal Modular Home Consultant

I would be happy to help you with any questions you may have. You can contact me on my direct number at or email me at .