

# FAIRFAX. VHT-002

Traditional



## SPECIFICATIONS

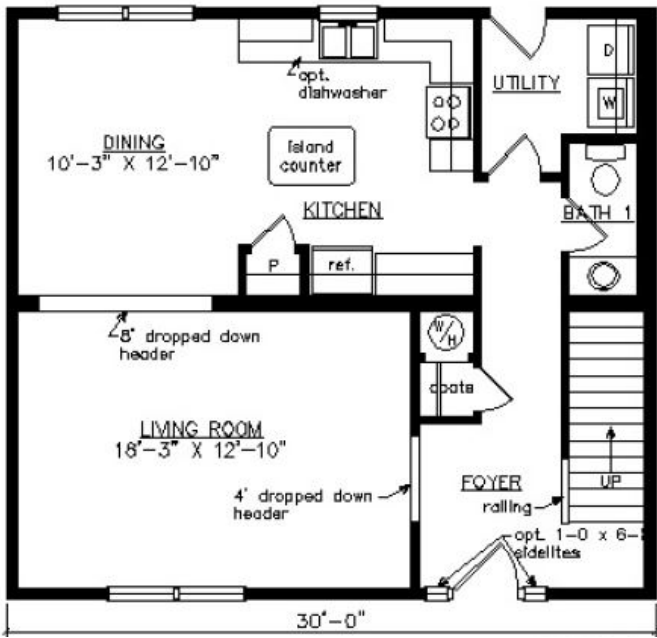
SQ. FT.	1640
BEDROOMS:	3
BATHROOMS:	2.5
LEVELS:	2

## OPTIONAL FEATURES

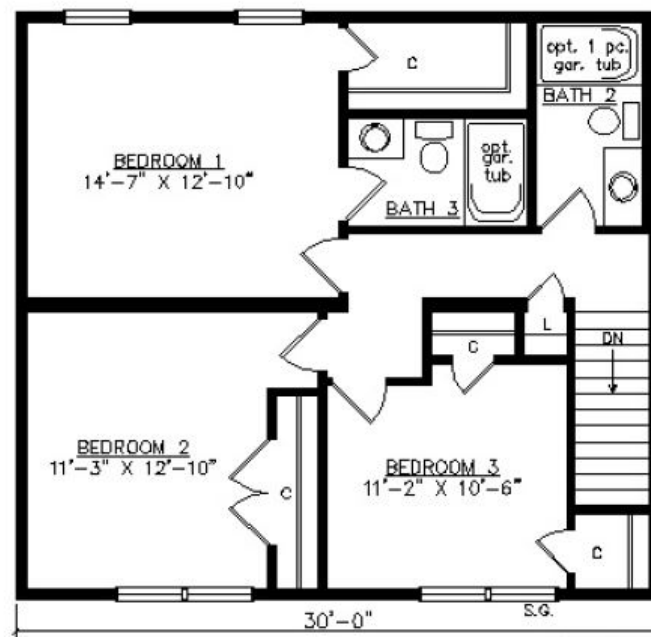
- ☒ Green Certification
- ☒ Energy Star

Shown with optional site built porch, door sidelites, and fanlite door.

### FIRST FLOOR



### SECOND FLOOR



YOUR  
NEW HOME  
CONSULTANT



**Hi, I'm Consultant Sales, your personal Modular Home Consultant**

I would be happy to help you with any questions you may have. You can contact me on my direct number at **Not Available** or email me at [contact@expressmodular.com](mailto:contact@expressmodular.com).