

PARK AVENUE I. VHC-026

Traditional



SPECIFICATIONS

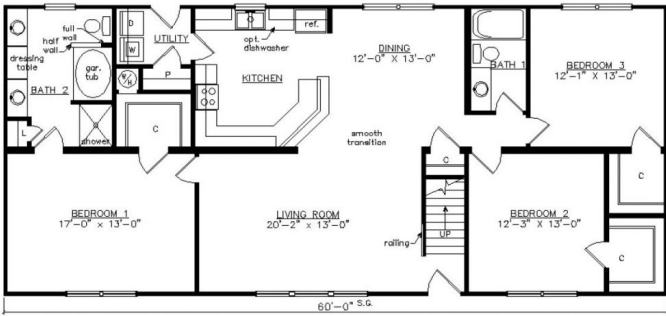
SQ. FT.	2640
BEDROOMS:	3
BATHROOMS:	2.0
LEVELS:	1.5

OPTIONAL FEATURES

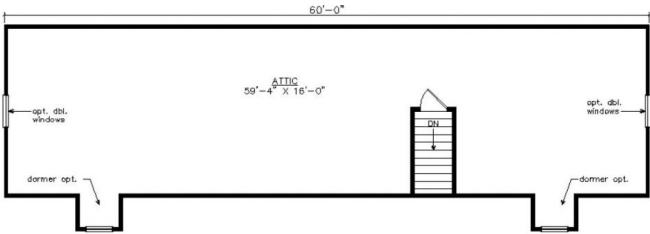
- ☒ Green Certification
- ☒ Energy Star

Shown with optional on-site built gable porch, dormers, and fanlite door.

FIRST FLOOR



UNFINISHED SECOND FLOOR



YOUR
NEW HOME
CONSULTANT

Hi, I'm , your personal Modular Home Consultant

I would be happy to help you with any questions you may have. You can contact me on my direct number at or email me at .