

OXFORD. VHC-004

Traditional



SPECIFICATIONS

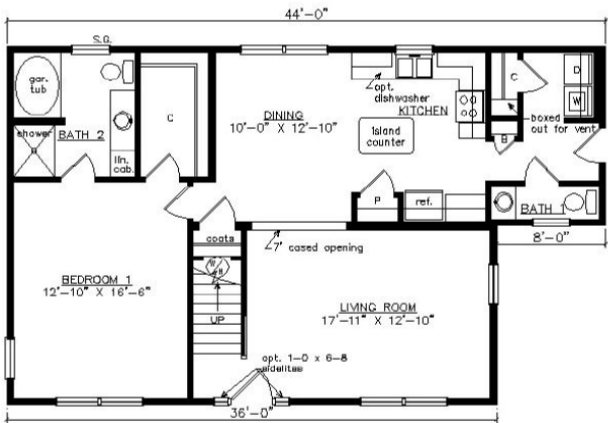
SQ. FT.	1733
BEDROOMS:	1
BATHROOMS:	1.5
LEVELS:	1.5

OPTIONAL FEATURES

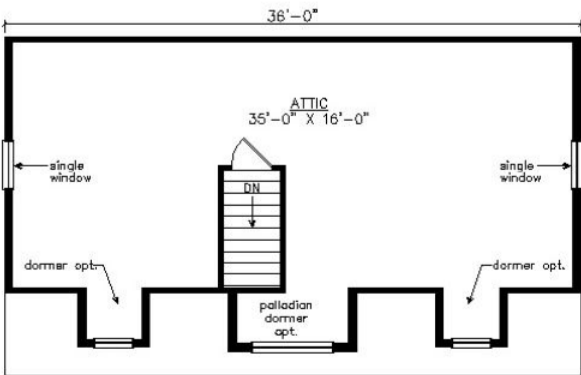
- ☒ Green Certification
- ☒ Energy Star

Shown with optional on-site built porch, fanlite door, door sidelites, and dormers.

FIRST FLOOR



UNFINISHED SECOND FLOOR



YOUR
NEW HOME
CONSULTANT



Hi, I'm Justin Bryant, your personal Modular Home Consultant

I would be happy to help you with any questions you may have. You can contact me on my direct number at **(877) 410-6334** or email me at

