

# GREENVILLE. VHR-039

Traditional



### SPECIFICATIONS

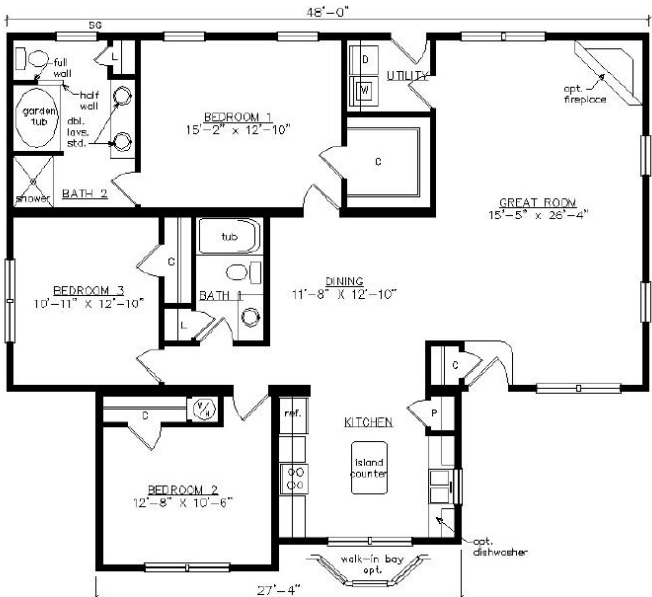
SQ. FT.	1658
BEDROOMS:	3
BATHROOMS:	2.0
LEVELS:	1.0

### OPTIONAL FEATURES

- ☒ Green Certification
- ☒ Energy Star

Shown with optional on-site built porch, triangle gable vent, fanlite door and accent shakes.

### FIRST FLOOR



YOUR  
NEW HOME  
CONSULTANT



Hi, I'm Consultant Sales, your personal Modular Home Consultant

I would be happy to help you with any questions you may have. You can contact me on my direct number at **Not Available** or email me at [contact@expressmodular.com](mailto:contact@expressmodular.com).