

EASTPORT. SCC-008

Traditional



SPECIFICATIONS

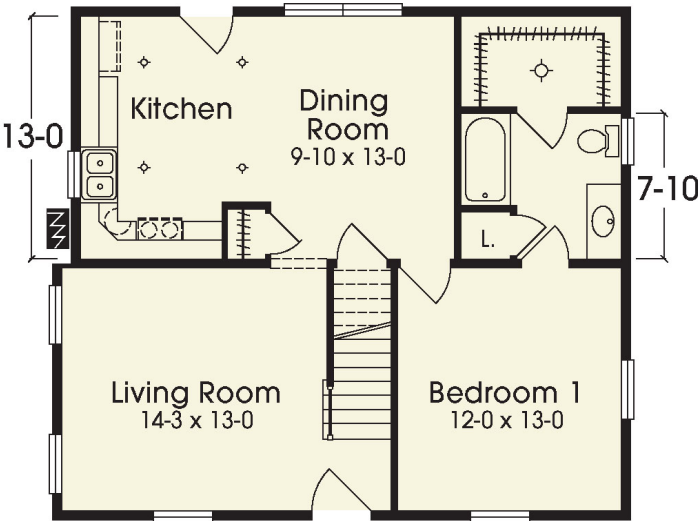
SQ. FT.	1527
BEDROOMS:	3
BATHROOMS:	2.0
LEVELS:	1.5

OPTIONAL FEATURES

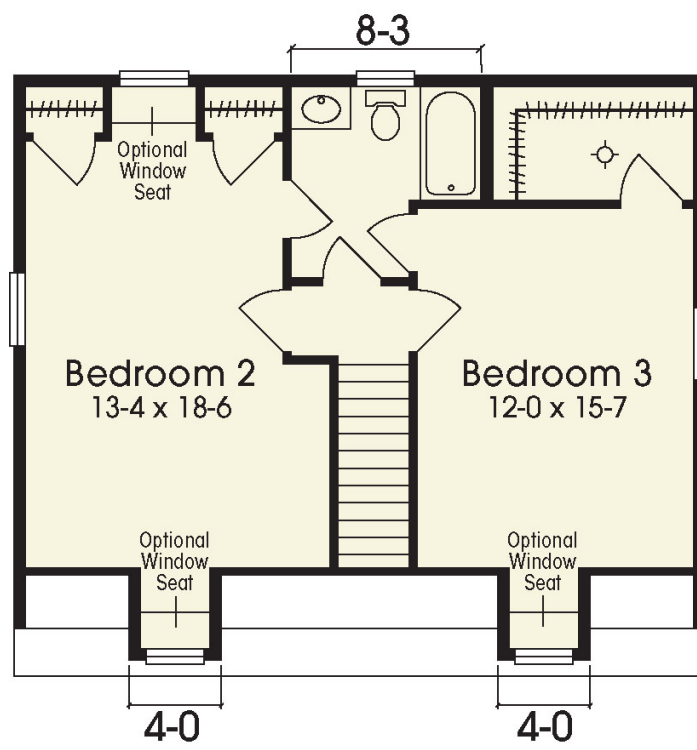
- ☒ Green Certification
- ☒ Energy Star

This sweet cape makes great use of space with combined kitchen/dining area and nearby living room. 1st-floor master suite and 2nd-floor additional bath and two bedrooms round out this very efficient floor plan. Note: The Eastport has (2) 4' front dormers standard. There are no length extensions available with this plan.

FIRST FLOOR



SECOND FLOOR



YOUR
NEW HOME
CONSULTANT

Hi, I'm , your personal Modular Home Consultant

I would be happy to help you with any questions you may have. You can contact me on my direct number at or email me at .