

# CAMBRIDGE II. SCC-003

Traditional



### SPECIFICATIONS

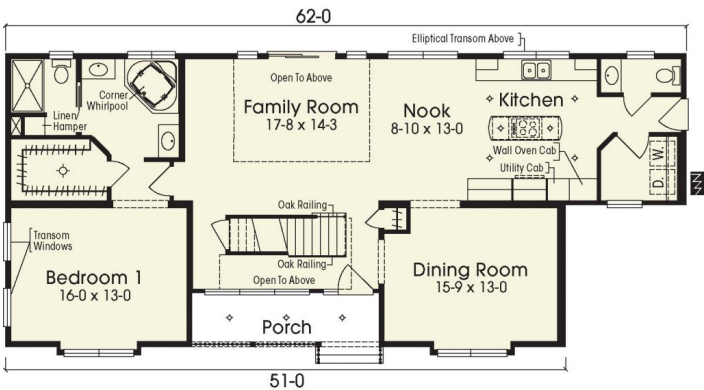
SQ. FT.	2590
BEDROOMS:	4
BATHROOMS:	2.5
LEVELS:	1.5

### OPTIONAL FEATURES

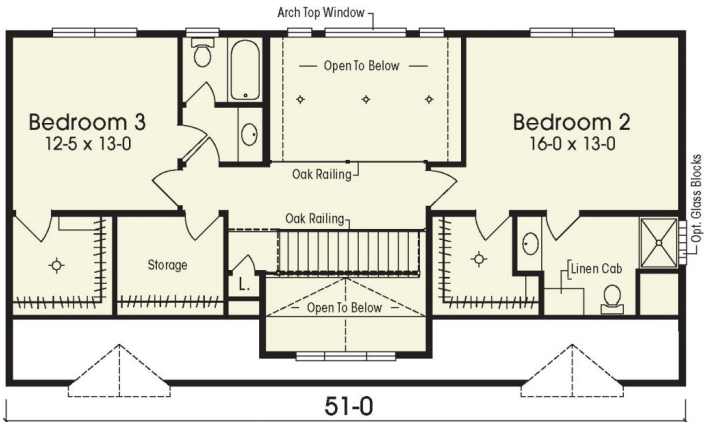
- ☒ Energy Star
- ☒ Garage Included

Sit back and enjoy making your plans to live in this spacious 4 bedroom, 2 ½ bath home. After entering the open airy foyer, you can choose the great room to the right or the formal dining room to the left both of which open into a welcoming kitchen /nook area. A first-floor master suite is tucked away allowing for privacy while the 2nd floor boasts 3 more generously proportioned bedrooms and computer/sitting room area! Note: Masonry work is done on-sight by the builder.

### FIRST FLOOR



### SECOND FLOOR







---

## Hi, I'm , your personal Modular Home Consultant

I would be happy to help you with any questions you may have. You can contact me on my direct number at or email me at .