

# BERKSHIRE . SCC-002

Contemporary Traditional



## SPECIFICATIONS

SQ. FT.	3775
BEDROOMS:	4
BATHROOMS:	2.5
LEVELS:	1.5

## OPTIONAL FEATURES

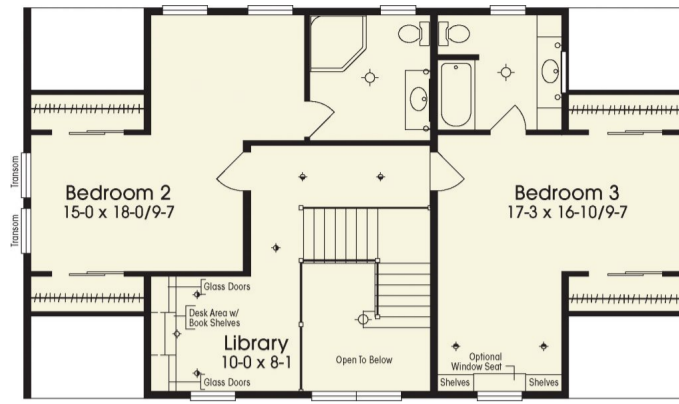
- Green Certification
- Energy Star

A unique floor plan that has many interesting features! The kitchen with its inviting sitting area featuring a fireplace will surely be the spot for many cozy family interactions. The dining room is situated to the left and a spacious great room also with fireplace on the right! The master suite is a little retreat area tucked away to the left while 2 other bedrooms with private baths are on 2nd floor. A little library/computer niche grace the stair top landing area. Making this plan with all its great features a very attractive choice!

## FIRST FLOOR



**SECOND FLOOR**



**YOUR  
NEW HOME  
CONSULTANT**



**Hi, I'm , your personal Modular Home Consultant**

I would be happy to help you with any questions you may have. You can contact me on my direct number at or email me at .

