

CASTLEBURY . SMS-020

Traditional



SPECIFICATIONS

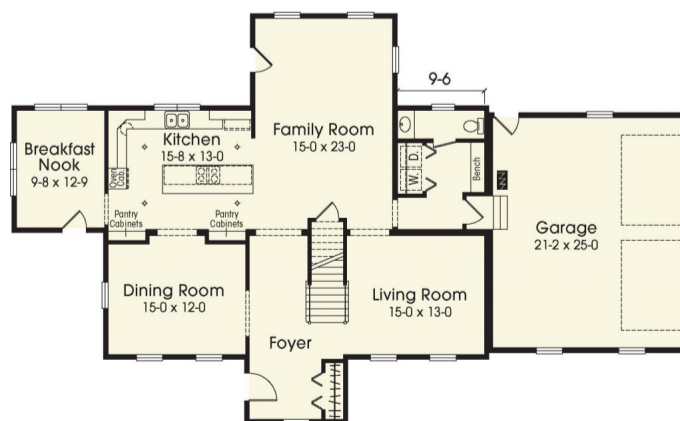
SQ. FT.	4013
BEDROOMS:	4
BATHROOMS:	2.5
LEVELS:	2

OPTIONAL FEATURES

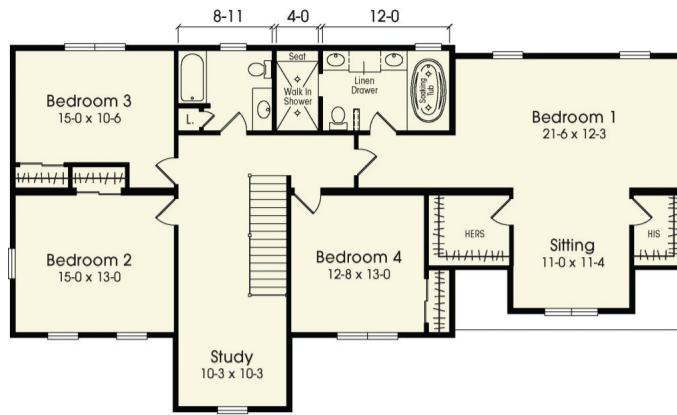
- Green Certification
- Energy Star

The Castlebury has all the amenities that one would want. It has an open floor plan on the first floor that makes for great flow through the home. There is a mud room that also has the washer and dryer plus has a powder room. You have not one but two pantry cabinets in the kitchen. On the second floor the Master Suite has his and her closets, plus a nice sitting area, study, 2 full baths and 3 additional bedrooms.

FIRST FLOOR



SECOND FLOOR



YOUR
NEW HOME
CONSULTANT



Hi, I'm , your personal Modular Home Consultant

I would be happy to help you with any questions you may have. You can contact me on my direct number at or email me at .

