

VAN BUREN. SMS-007

Traditional



SPECIFICATIONS

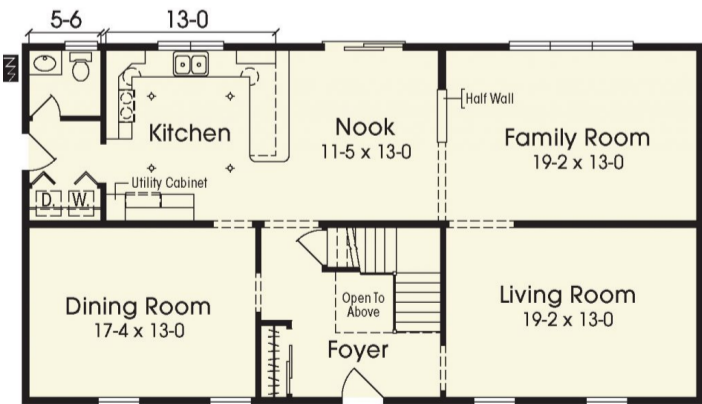
SQ. FT.	2860
BEDROOMS:	4
BATHROOMS:	2.5
LEVELS:	2

OPTIONAL FEATURES

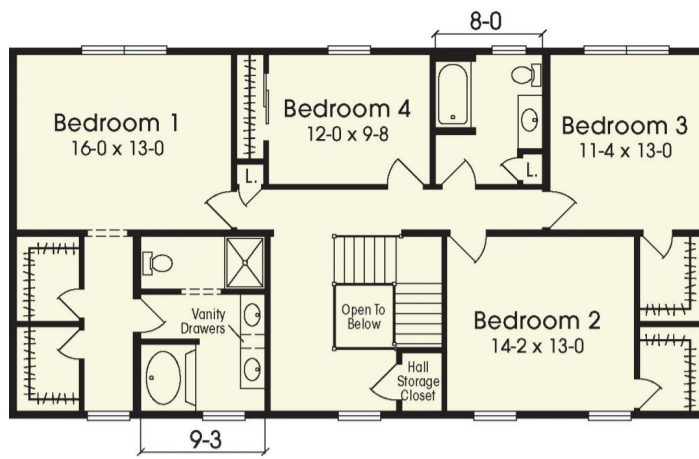
- ☒ Green Certification
- ☒ Energy Star

The Van Buren gives you both formal and informal living and has all the amenities that will make you love your new home. The rear of the home is for family living and is an open floor plan. The front of the home is a formal dining room and living room for all of your dinner parties and entertaining. There is a closet for storage in the foyer that is perfect for all your winter things. On the second level, you have the Master Suite with his and her walk-in closets, double vanity with drawers down the center for extra storage and a garden tub. There are 3 additional bedrooms and a full bath on the second level as well. Optional features as shown are a high-pitched roof with dormers, dentil molding, elongated windows and grill, double sidelight front door with transom and two car garage.

FIRST FLOOR



SECOND FLOOR



YOUR
NEW HOME
CONSULTANT



Hi, I'm Justin Bryant, your personal Modular Home Consultant

I would be happy to help you with any questions you may have. You can contact me on my direct number at **(877) 410-6334** or email me at justin.bryant@impresamodular.com.