

# BIRCHWOOD I. SCS-027

Traditional



## SPECIFICATIONS

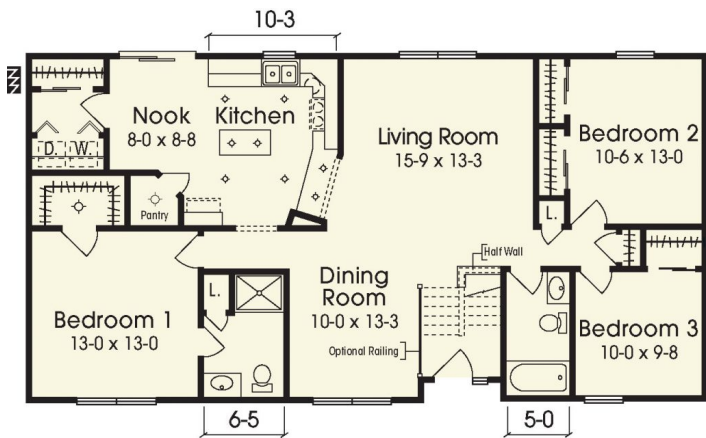
SQ. FT.	1485
BEDROOMS:	3
BATHROOMS:	1.75
LEVELS:	1

## OPTIONAL FEATURES

- ☒ Energy Star
- ☒ Garage Included

The Birchwood as shown features a standard roof dormer with optional high pitched roof, decorative gable vent, eave returns, raised panel shutters, window grills and mantles, elongated dining room window, double sidelight and circle top window.

## FIRST FLOOR



YOUR  
NEW HOME  
CONSULTANT



Hi, I'm Justin Bryant, your personal Modular Home Consultant

I would be happy to help you with any questions you may have. You can contact me on my direct number at **(877) 410-6334** or email me at [justin.bryant@impresamodular.com](mailto:justin.bryant@impresamodular.com).