

SAVANNAH II. SCS-024

Traditional



SPECIFICATIONS

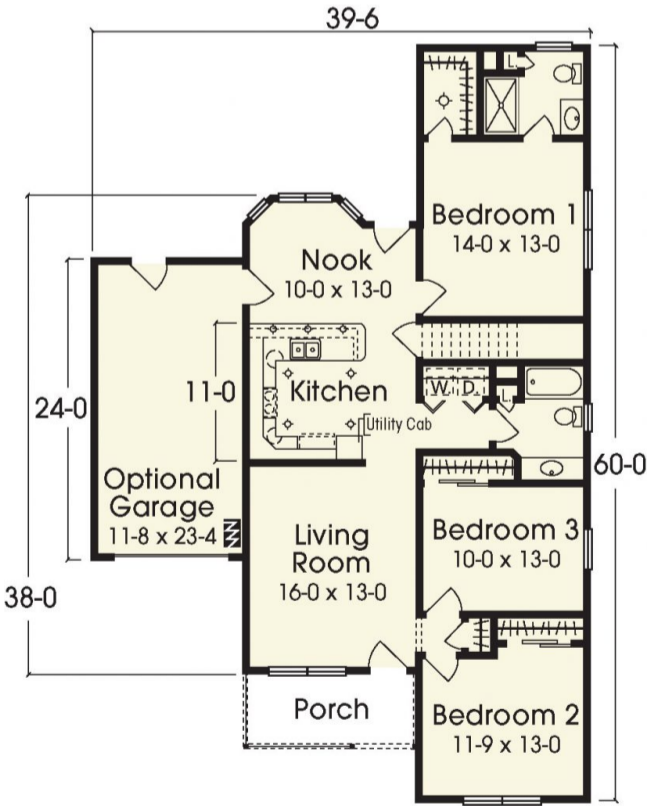
SQ. FT.	1348
BEDROOMS:	3
BATHROOMS:	2.0
LEVELS:	1

OPTIONAL FEATURES

- ☒ Green Certification
- ☒ Energy Star

Upon entering this cozy ranch from a cute front porch, you'll find a very homey layout comprising of living room, kitchen and nook streamlined on left with two bedrooms and master suite on the right. This plan is perfect for long narrow lots.

SAVANNAH II



YOUR
NEW HOME
CONSULTANT

Hi, I'm , your personal Modular Home Consultant

I would be happy to help you with any questions you may have. You can contact me on my direct number at or email me at .