

NEW HUNTINGTON II. SCS-023

Traditional



SPECIFICATIONS

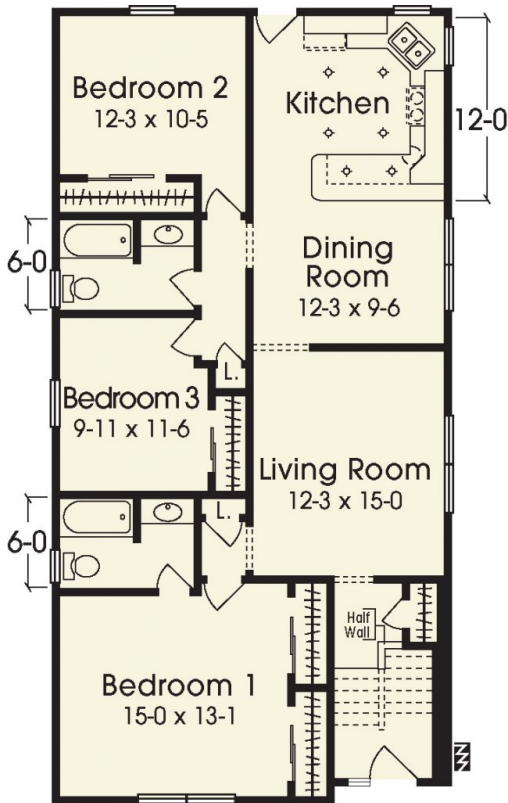
SQ. FT.	1344
BEDROOMS:	3
BATHROOMS:	2.0
LEVELS:	1

OPTIONAL FEATURES

- ☒ Green Certification
- ☒ Energy Star

This versatile floor plan can be adjusted for ranch or bi-level living and is perfect for a lot with width constrictions. It features a nice foyer entry with all open family space of living, dining and kitchen to the right and three nice sized bedrooms to the left. Note: Bi-Level homes include a front door with sidelight.

FIRST FLOOR



YOUR
NEW HOME
CONSULTANT



Hi, I'm David Lipa, your personal Modular Home Consultant

I would be happy to help you with any questions you may have. You can contact me on my direct number at **(877) 419-1478** or email me at David.Lippa@impresamodular.com.