

# NEW OXFORD II. SCS-010

Traditional



### SPECIFICATIONS

SQ. FT.	1723
BEDROOMS:	3
BATHROOMS:	2.0
LEVELS:	1

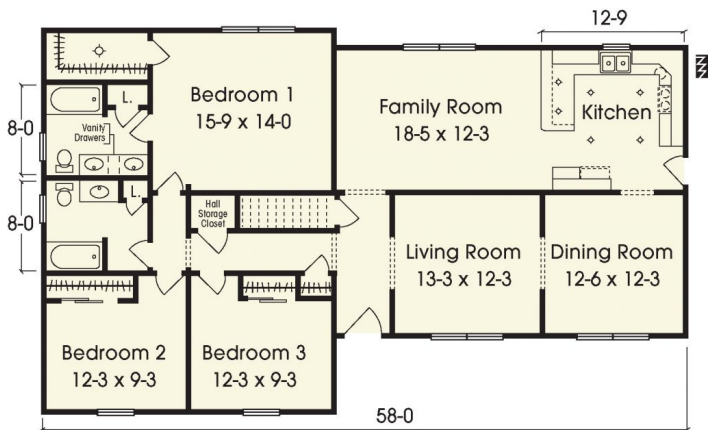
### OPTIONAL FEATURES

- ☒ Green Certification
- ☒ Energy Star

The New Oxford is so nice and has great curb appeal with its gable roof and covered porch. It is just as great inside. You can make this plan as casual as you want or as formal as you might like. The kitchen and family room are open to one another and great for watch the little ones all while preparing dinner. After the little ones go to bed you have the formal dining and living room to gather with friends.

The New Oxford II ranch as pictured features optional dormer with shake siding, transoms above windows, window grills, gable, end eave with decorative corbels and shake siding, decorative gable end vent, full glass door with grills and lineals around windows and door. Note: Porch, metal roof, and masonry are provided and installed by the builder.

### FIRST FLOOR



YOUR  
NEW HOME  
CONSULTANT

Hi, I'm , your personal Modular Home Consultant

I would be happy to help you with any questions you may have. You can contact me on my direct number at or email me at .