

CHRISTINA. SCS-005

Traditional



SPECIFICATIONS

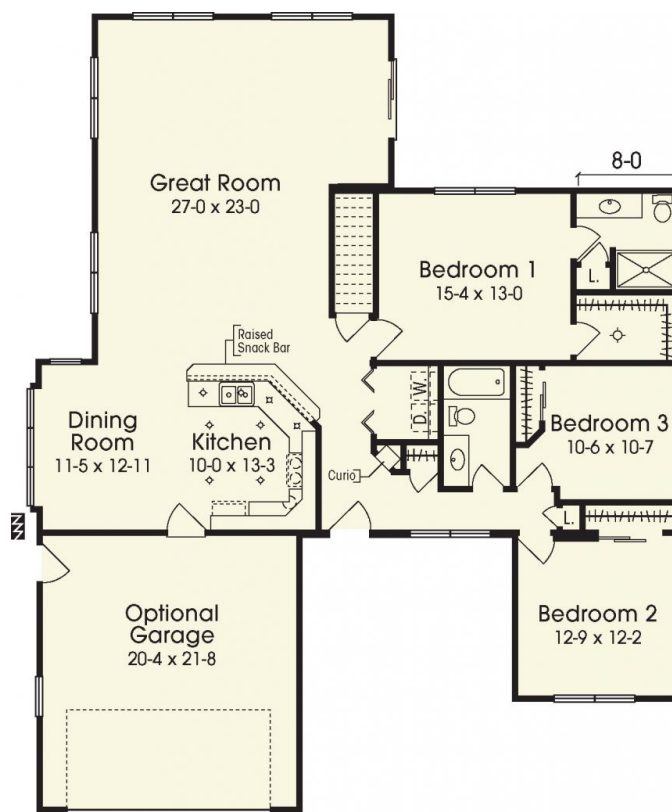
SQ. FT.	1856
BEDROOMS:	3
BATHROOMS:	1.75
LEVELS:	1

OPTIONAL FEATURES

- ☒ Green Certification
- ☒ Energy Star

A feeling of spaciousness is what you'll notice with this efficient floor plan. A charming little porch enhances the entryway as you step into the wonderfully transitional foyer. Leading off to the right you will find 2 bedrooms and a full bath tucked away from the main living area to create a feeling of privacy. Straight ahead from the foyer with it's built in lighted curio display you'll be delighted with the spacious vaulted ceiling in the great room also featuring a stone fireplace with entertainment area. A fantastic kitchen and dining space take full advantage of the openness into the great room with it's ceiling to floor window views flanking the stone fireplace. You'll love entertaining guests and family! To the right of the great room is a nicely situated master suite to complete this unique floor plan. Note: When optioning a vaulted ceiling in great room, an 8/12 roof truss is used on this portion of the home.

FIRST FLOOR



YOUR
NEW HOME
CONSULTANT



Hi, I'm Justin Bryant, your personal Modular Home Consultant

I would be happy to help you with any questions you may have. You can contact me on my direct number at **(877) 410-6334** or email me at justin.bryant@impresamodular.com.