

LEXINGTON PARK. SCS-004

Traditional



SPECIFICATIONS

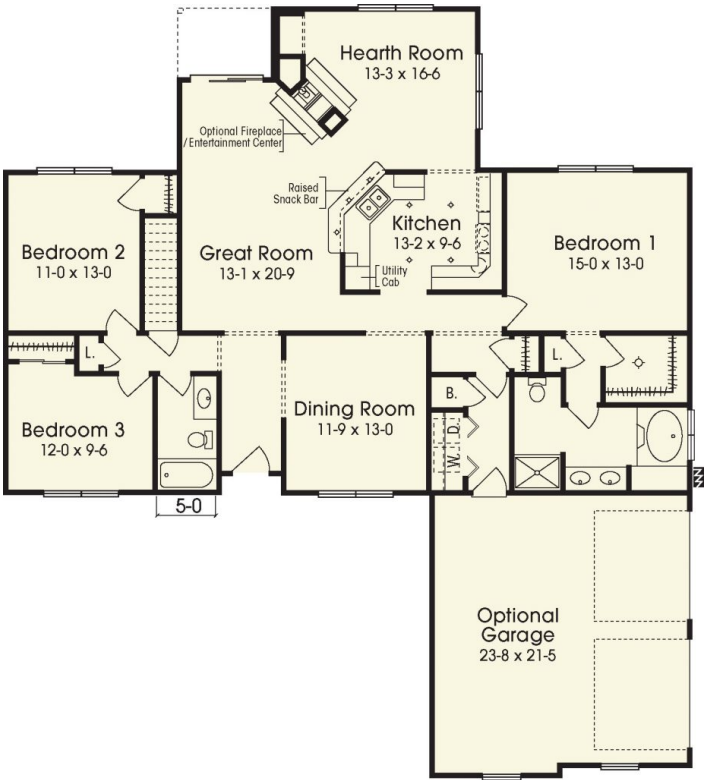
SQ. FT.	1890
BEDROOMS:	3
BATHROOMS:	2.0
LEVELS:	1

OPTIONAL FEATURES

- ☒ Green Certification
- ☒ Energy Star

The Lexington Park features a wide-open kitchen, great room and hearth room providing a classic contemporary feeling. The exterior features an optional high pitched saddle roof, gable dormer, and porch, raised panel shutters, window grills and mantles, front door with single sidelight, gable eave returns and front projection side entry garage with decorative louvered vent.

FIRST FLOOR





Hi, I'm , your personal Modular Home Consultant

I would be happy to help you with any questions you may have. You can contact me on my direct number at or email me at .