

WOODLAND PARK. SCS-002

Traditional



SPECIFICATIONS

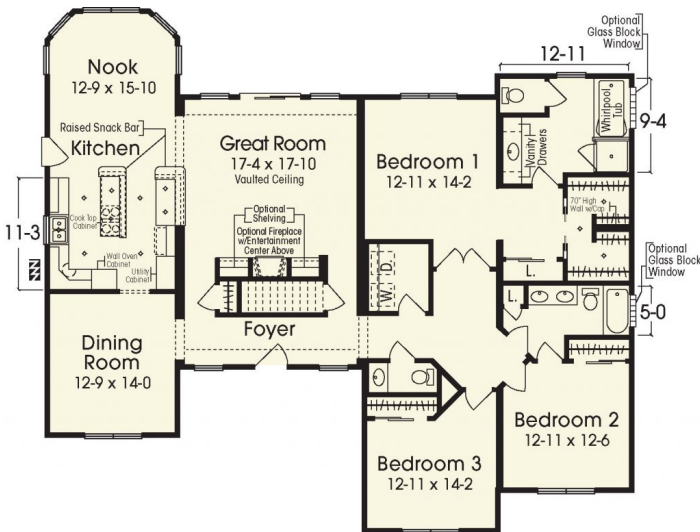
SQ. FT.	2269
BEDROOMS:	3
BATHROOMS:	2.5
LEVELS:	1

OPTIONAL FEATURES

- ☒ Green Certification
- ☒ Energy Star

This beautiful ranch home features a spacious living area comprised of kitchen, bump out nook adorned with lots of window views, dining room and vaulted ceiling great room with lots of fantastic options available such as fireplace/entertainment area and shelving. Decorate to create a perfect space to entertain your family and friends! To the right of the foyer entry are housed the Master Suite as well as 2 other large bedrooms and a bath. A wonderful space to make your own.

FIRST FLOOR



YOUR
NEW HOME
CONSULTANT

Hi, I'm , your personal Modular Home Consultant

I would be happy to help you with any questions you may have. You can contact me on my direct number at or email me at .