

PARKRIDGE . SCS-001

Traditional



SPECIFICATIONS

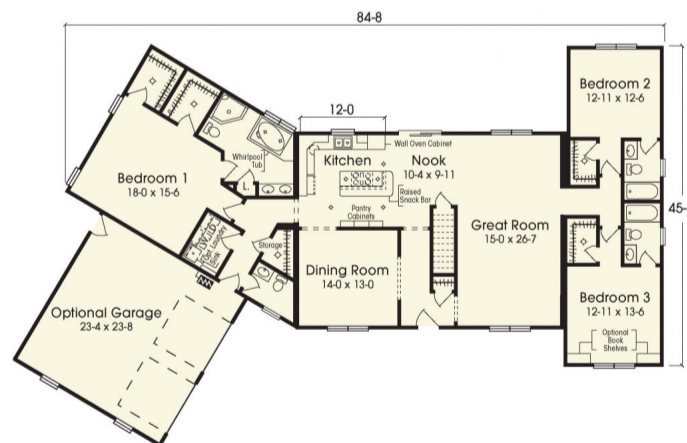
SQ. FT.	2411
BEDROOMS:	3
BATHROOMS:	3.5
LEVELS:	1

OPTIONAL FEATURES

- Green Certification
- Energy Star

The Parkridge is the perfect plan for families with teens. The Master Suite is really a retreat way off in its own space across the home for the two additional bedrooms. It has his and her walk-in closets, a huge Master Bath with a garden tub and double vanities, and a corner shower. The washer/dryer are conveniently located right outside of the master bedroom. The center of this home is your family's living space or as some call it the hub of the house. The kitchen flows nicely into the nook and dining room. The two additional bedrooms also have their own private baths with walk-in closets.

FIRST FLOOR



YOUR
NEW HOME
CONSULTANT



Hi, I'm , your personal Modular Home Consultant

I would be happy to help you with any questions you may have. You can contact me on my direct number at or email me at .

