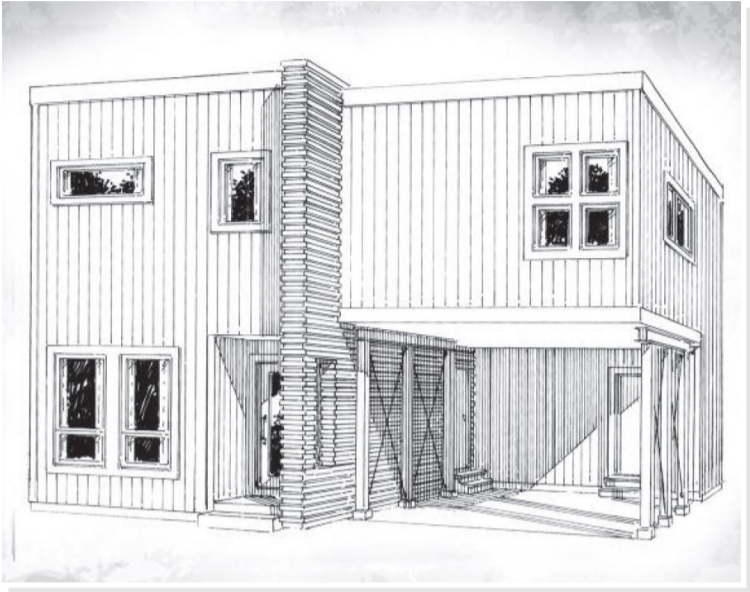


URBAN TIER. SMA-005

ContemporaryModern



SPECIFICATIONS

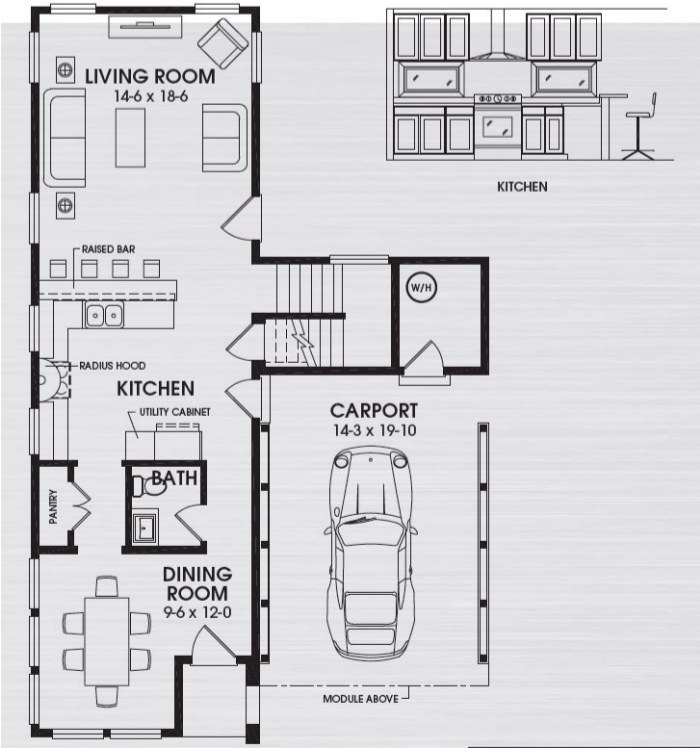
SQ. FT.	2120
BEDROOMS:	3
BATHROOMS:	2.5
LEVELS:	2

OPTIONAL FEATURES

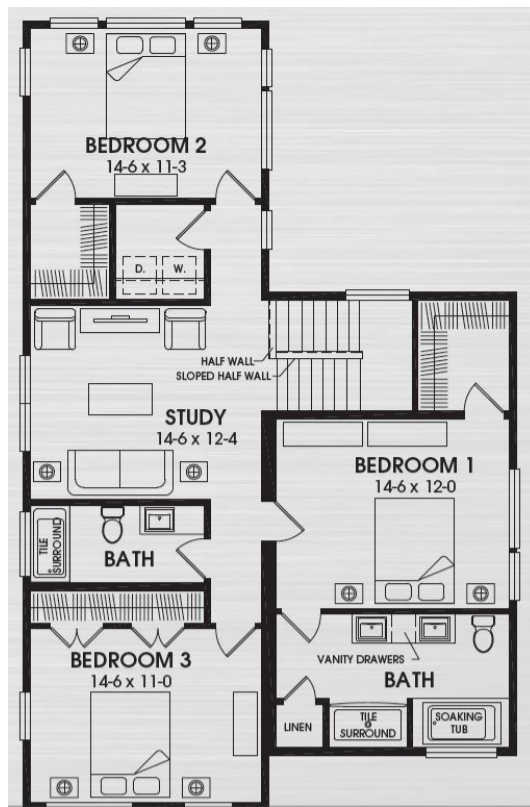
- ☒ Green Certification
- ☒ Energy Star

The Urban Tier design footprint provides great appeal for smaller home sites. the general living space is situated on the first floor with the covered parking area attached. The second floor 3 bedrooms are separated by a central study area that provides a cozy private space. The Master Bedroom Suite is complimented by a large vanity space with a shower and soaking tub combination.

FIRST FLOOR



SECOND FLOOR



YOUR
NEW HOME
CONSULTANT



Hi, I'm Justin Bryant, your personal Modular Home Consultant

I would be happy to help you with any questions you may have. You can contact me on my direct number at **(877) 410-6334** or email me at justin.bryant@impresamodular.com.