

WINTER PARK. SVC-014

CabinChaletCoastalTraditional



SPECIFICATIONS

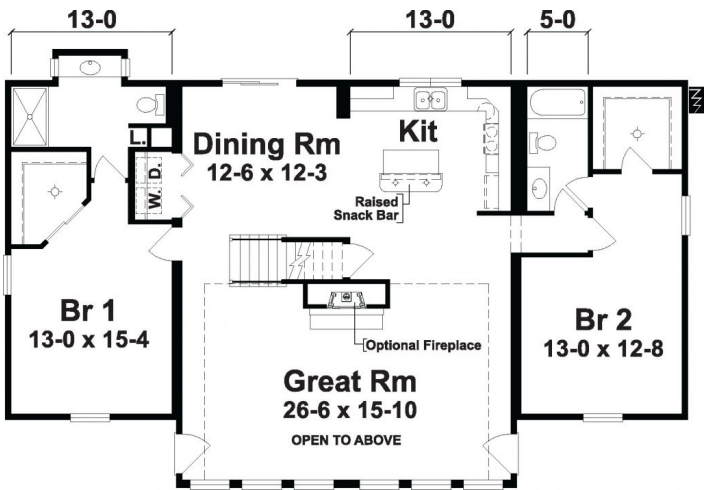
SQ. FT.	2397
BEDROOMS:	4
BATHROOMS:	3.0
LEVELS:	1.5

OPTIONAL FEATURES

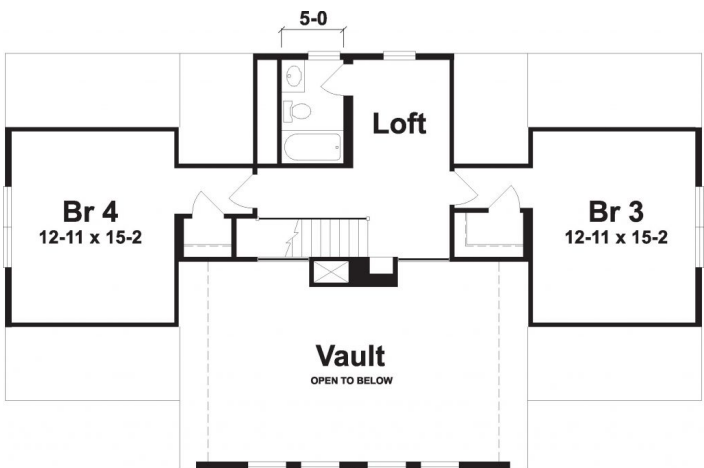
- ☒ Green Certification
- ☒ Energy Star

The Winterpark is truly a great home for both lakeside or mountain retreat lifestyles. This home provides 2 stories of living along with Great Room features wall of windows that can provide spectacular views. The Great Room windows are standard along with a full glass doors that exit each side of the Great Room. The Exterior is highlighted by optional log siding and elongated first floor windows with grills. The chimney box with stone accent and deck are site provided and installed.

FIRST FLOOR



SUGGESTED SECOND FLOOR



YOUR
NEW HOME
CONSULTANT

Hi, I'm , your personal Modular Home Consultant

I would be happy to help you with any questions you may have. You can contact me on my direct number at or email me at .