

SEASIDE I. SBS-016

CoastalContemporary



SPECIFICATIONS

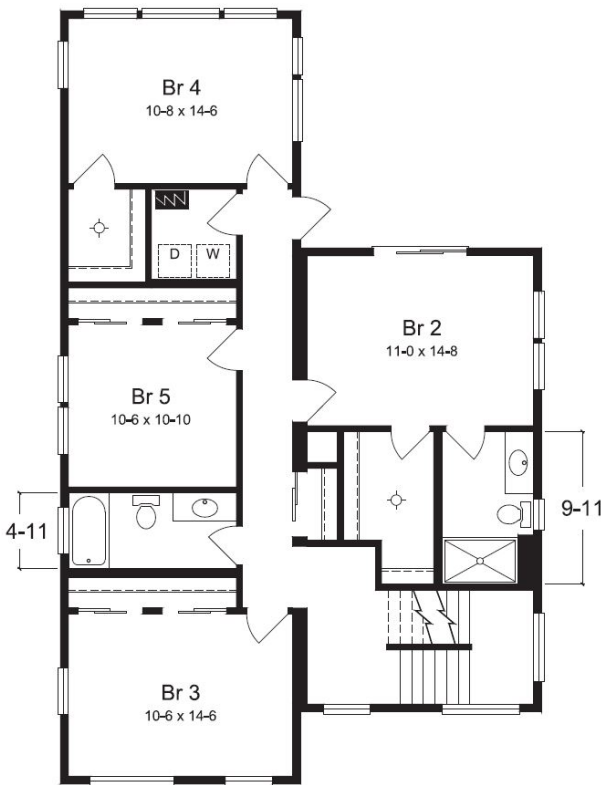
SQ. FT.	2486
BEDROOMS:	5
BATHROOMS:	3.5
LEVELS:	2

OPTIONAL FEATURES

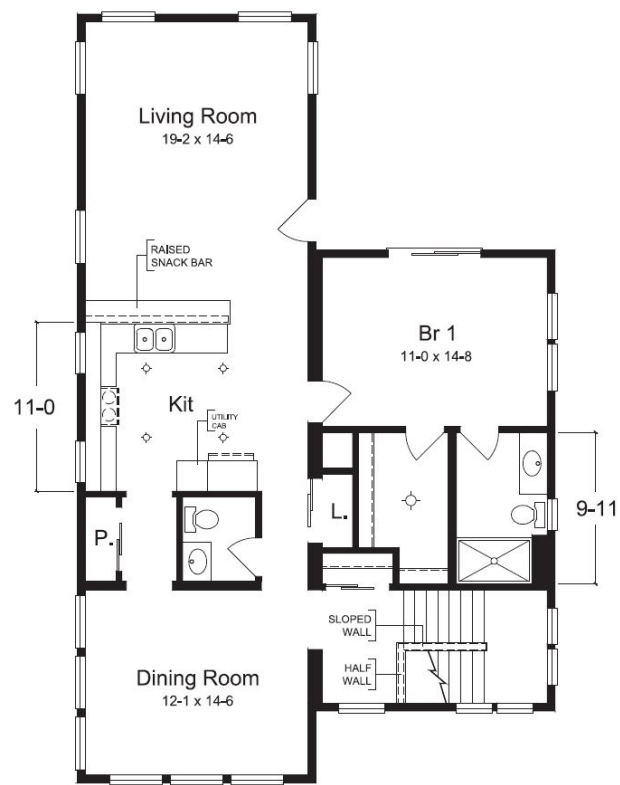
- ☒ Green Certification
- ☒ Energy Star

The Seaside I features five bedrooms, including two Master Suites that will provide ample accommodations for friends and family to gather and make memories in this stunning contemporary home plan.

FIRST FLOOR



SECOND FLOOR



YOUR
NEW HOME
CONSULTANT

Hi, I'm , your personal Modular Home Consultant

I would be happy to help you with any questions you may have. You can contact me on my direct number at or email me at .