



SPECIFICATIONS

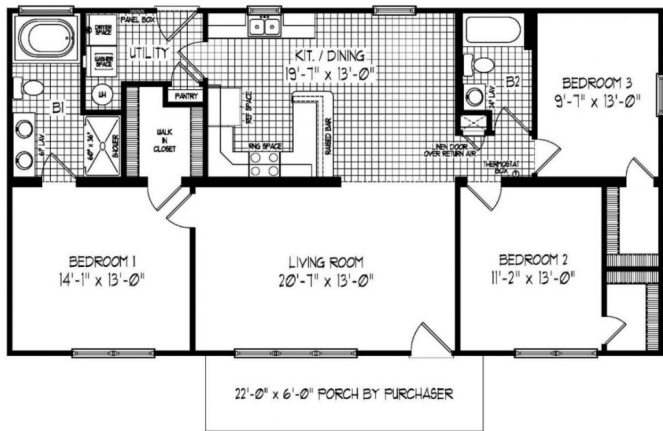
SQ. FT.	1432
BEDROOMS:	3
BATHROOMS:	2.0
LEVELS:	1

OPTIONAL FEATURES

- ☒ Green Certification ☒ Energy Star

This is a cute home with lots of curb appeal. It has a gable roof and a covered front porch (on-site by others). The Master Suite is set apart from the other two bed rooms for privacy. The Master Bath has a soaking tub great for relaxing in and a double vanity. All bed rooms have walk in closets for the girls in your family.

FIRST FLOOR



YOUR
NEW HOME
CONSULTANT



Hi, I'm Justin Bryant, your personal Modular Home Consultant

I would be happy to help you with any questions you may have. You can contact me on my direct number at **(877) 410-6334** or email me at justin.bryant@impresamodular.com.