

# CEDARVILLE. SLS-006

Traditional



## SPECIFICATIONS

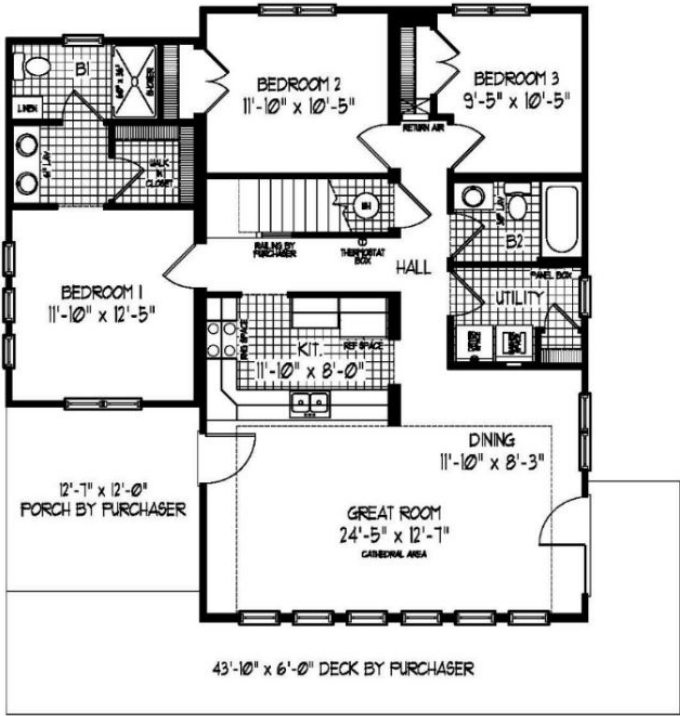
SQ. FT.	1917
BEDROOMS:	3
BATHROOMS:	2.0
LEVELS:	1.5

## OPTIONAL FEATURES

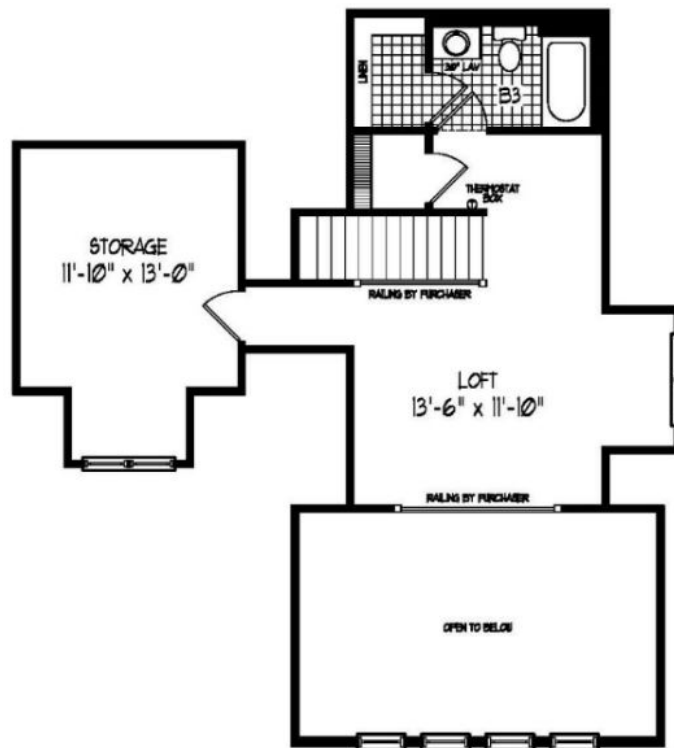
- ☒ Green Certification
- ☒ Energy Star

The Cedarville is perfect for a lot with a view. With its trapezoid window, dormer and wrap around deck, you have plenty of places to see the view. When you first walk into the great room you be struck by the open and airiness of this plan. This plan has 3 bedrooms and 2 baths but by finishing the suggested second floor you can get an third bath and a loft/sitting area that overlooks the down stair great room.

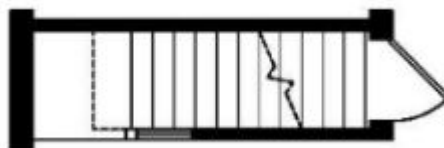
### FIRST FLOOR



### PROPOSED SECOND FLOOR



## BASEMENT ALTERNATE



YOUR  
NEW HOME  
CONSULTANT



**Hi, I'm Justin Bryant, your personal Modular Home Consultant**

I would be happy to help you with any questions you may have. You can contact me on my direct number at **(877) 410-6334** or email me at [justin.bryant@impresamodular.com](mailto:justin.bryant@impresamodular.com).