

# BLACKSTONE. SLS-004

Traditional



## SPECIFICATIONS

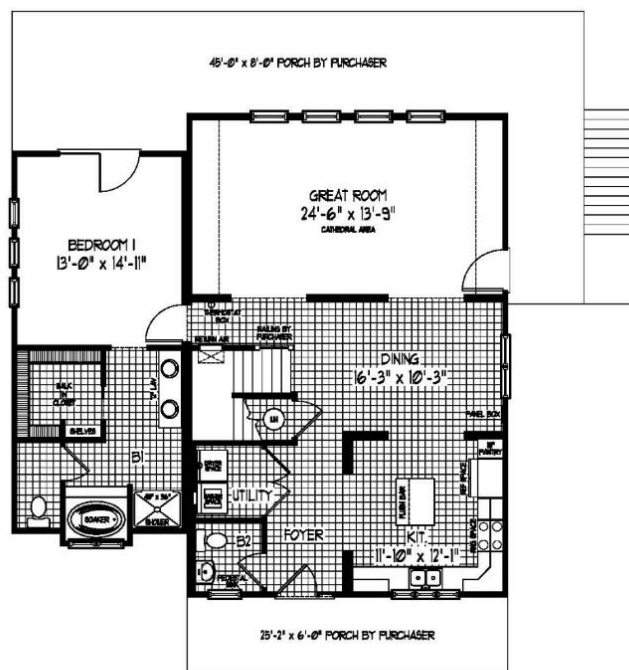
SQ. FT.	2121
BEDROOMS:	3
BATHROOMS:	2.5
LEVELS:	1.5

## OPTIONAL FEATURES

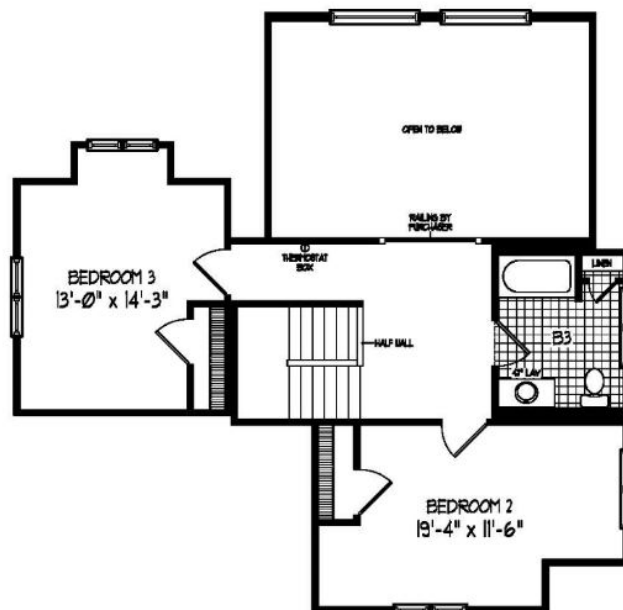
- ☒ Green Certification
- ☒ Energy Star

This house is perfect for a couple just starting out or someone downsizing. The foyer has a powder room, utility room and to the right is the kitchen. Hugh great room for entertaining or having friends over for the big game. Master Bath has a garden tub, walk in shower and dual vanities.

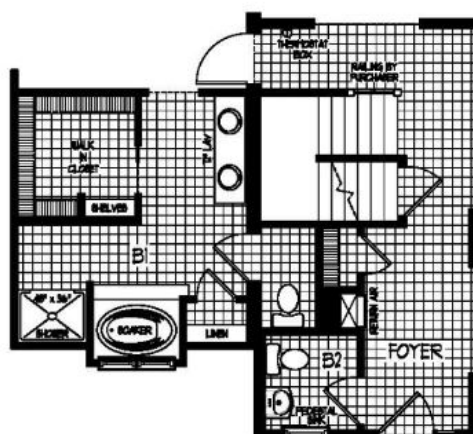
### FIRST FLOOR



## PROPOSED SECOND FLOOR



## BASEMENT ALTERNATE





I would be happy to help you with any questions you may have. You can contact me on my direct number at **(877) 410-6334** or email me at [justin.bryant@impresamodular.com](mailto:justin.bryant@impresamodular.com).