

SEASIDE HEIGHTS . CLS-015

Coastal Traditional



SPECIFICATIONS

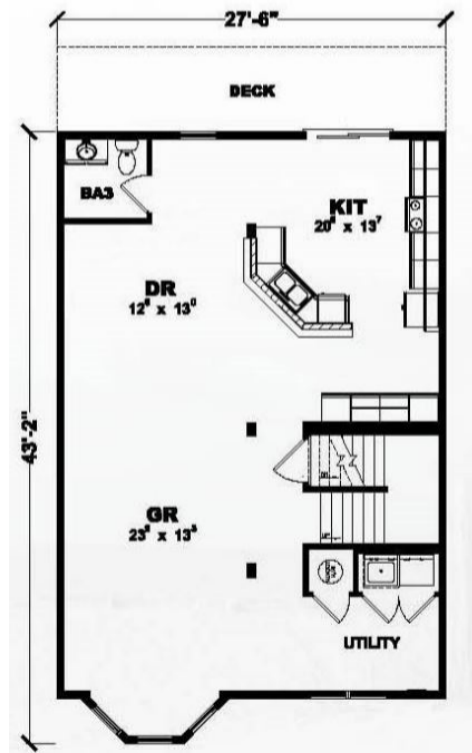
SQ. FT.	2246
BEDROOMS:	4
BATHROOMS:	3.5
LEVELS:	2.0

OPTIONAL FEATURES

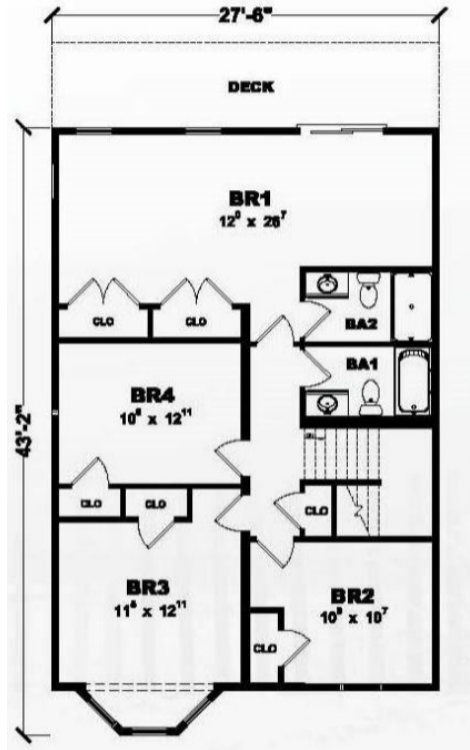
- Green Certification
- Energy Star

You will love coming home to this house with all of the views from every room in the home. The whole main floor is all open living space, plus a powder room. The kitchen has a sliding glass door so that you can easily go outside to grill or chill in the backyard. The master bedroom runs along the whole backside of the home and has a sliding glass door that opens to the upper deck (on-site by others).

FIRST FLOOR



SECOND FLOOR



YOUR
NEW HOME
CONSULTANT



Hi, I'm , your personal Modular Home Consultant

I would be happy to help you with any questions you may have. You can contact me on my direct number at or email me at .

