

OCEAN VIEW. CLS-009

CoastalTraditional



SPECIFICATIONS

SQ. FT.	1031
BEDROOMS:	2
BATHROOMS:	1.5
LEVELS:	1.5

OPTIONAL FEATURES

- ☒ Green Certification
- ☒ Energy Star

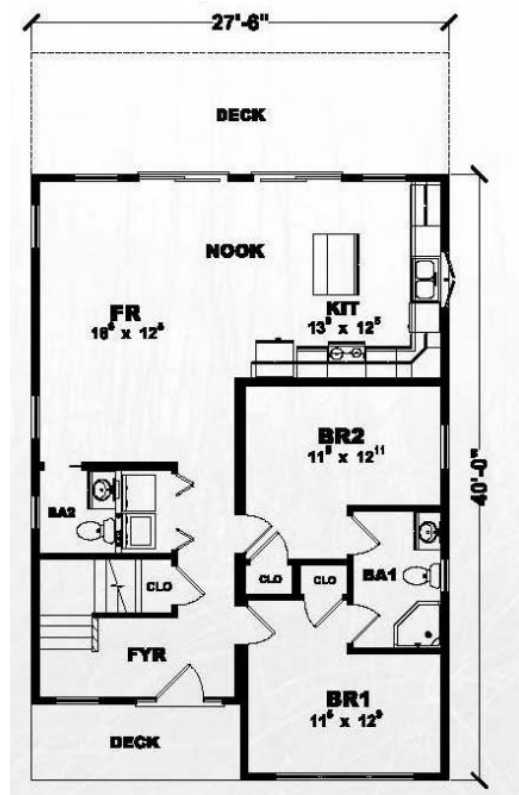
The Ocean View home plan is a contemporary one and a half-story home. This design features 2 bedrooms and 1.5 bathrooms. The first floor of the home has an open-concept living space and kitchen with a large center island and breakfast nook. The living room is perfect for entertaining and has sliding doors that lead out to the backyard. The first floor also includes a half-bathroom, and a laundry room.

The master bedroom and bedroom #2 are located on the main level and share a full bathroom.

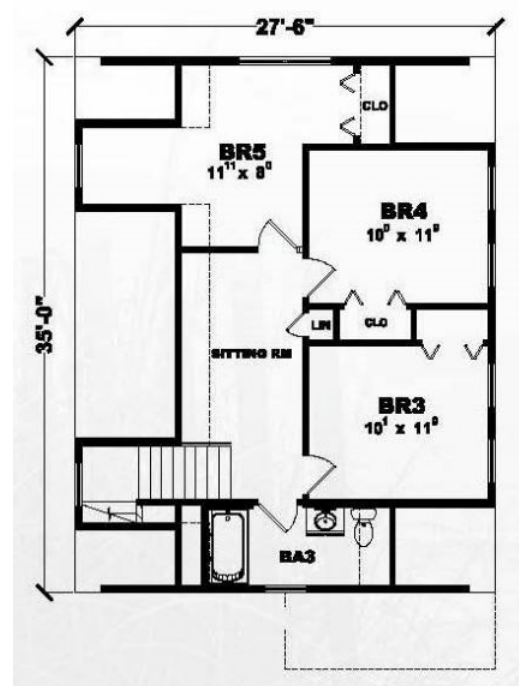
A proposed second floor of the Ocean View plan could feature three bedrooms and a full bathroom, with a sitting area.

The exterior of the Ocean View plan is modern and eye-catching with clean lines, a gabled roof, and a covered front porch. The home also has the option (off site builder) for a deck on the back of the house. With its spacious layout and stylish design, the Ocean View plan is a great choice for those looking for a contemporary family home.

FIRST FLOOR



PROPOSED SECOND FLOOR



YOUR
NEW HOME
CONSULTANT

Hi, I'm , your personal Modular Home Consultant

I would be happy to help you with any questions you may have. You can contact me on my direct number at or email me at .