

# COASTAL COTTAGE. CLS-005

CoastalTraditional



### SPECIFICATIONS

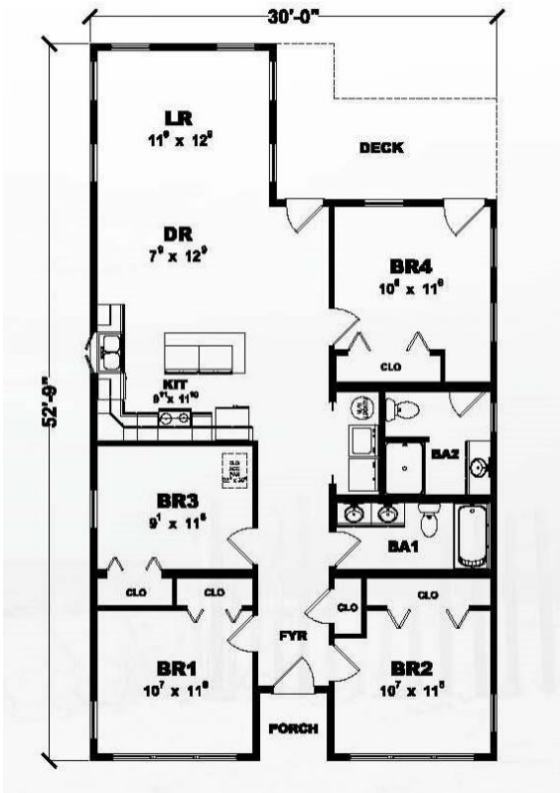
SQ. FT.	1371
BEDROOMS:	4
BATHROOMS:	2.0
LEVELS:	1

### OPTIONAL FEATURES

- ☒ Green Certification
- ☒ Energy Star

The Coastal Cottage plan is perfect for an ocean front home or any land with a view. This home has lots of windows and therefor it is very light and airy. Kitchen, dining and living room all flow together at the back of the house for the great view along with the master bedroom and bath.

### FIRST FLOOR



YOUR  
NEW HOME  
CONSULTANT



Hi, I'm Justin Bryant, your personal Modular Home Consultant

I would be happy to help you with any questions you may have. You can contact me on my direct number at (877) 410-6334 or email me at [justin.bryant@impresamodular.com](mailto:justin.bryant@impresamodular.com).