

# BEACH BREAK . CLS-001

Coastal Traditional



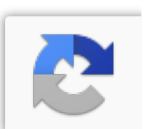
## SPECIFICATIONS

SQ. FT.	2283
BEDROOMS:	5
BATHROOMS:	3.0
LEVELS:	2

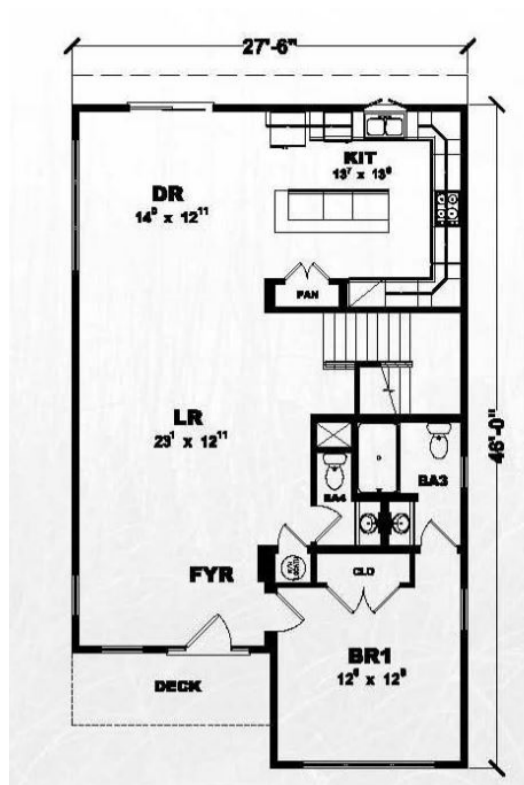
## OPTIONAL FEATURES

- Green Certification
- Energy Star

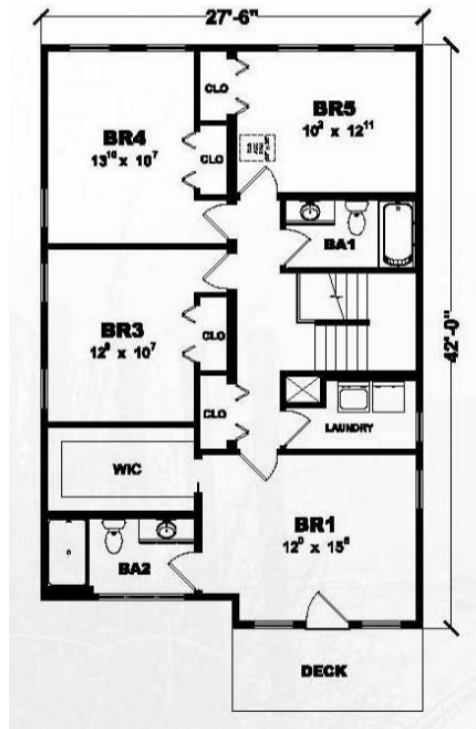
The Beach Break has lots of windows for the perfect view whether it be mountains or beaches. The kitchen has an island and a window over the sink plus a pantry. This home has one bedroom on the ground floor and four bedrooms on the upper level.



**FIRST FLOOR**



**SECOND FLOOR**



**YOUR  
NEW HOME  
CONSULTANT**



**Hi, I'm , your personal Modular Home Consultant**

I would be happy to help you with any questions you may have. You can contact me on my direct number at or email me at .

