

HYDE PARK. SHL-016

Traditional



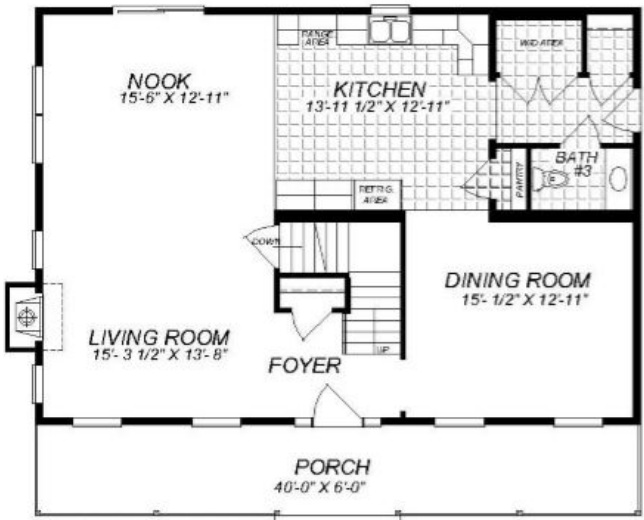
SPECIFICATIONS

SQ. FT.	2200
BEDROOMS:	3
BATHROOMS:	2.5
LEVELS:	2

OPTIONAL FEATURES

- ☒ Green Certification
- ☒ Energy Star

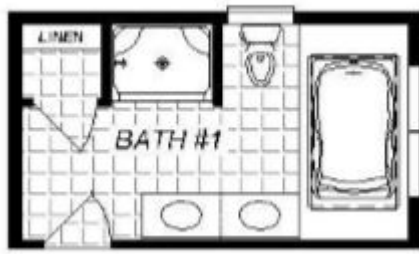
FIRST FLOOR



SECOND FLOOR



OPTIONAL BATHROOM



YOUR
NEW HOME
CONSULTANT



Hi, I'm Justin Bryant, your personal Modular Home Consultant

I would be happy to help you with any questions you may have. You can contact me on my direct number at **(877) 410-6334** or email me at

justin.bryant@impresamodular.com.