

# WILLIAMSBURG I. SHL-006

Traditional



### SPECIFICATIONS

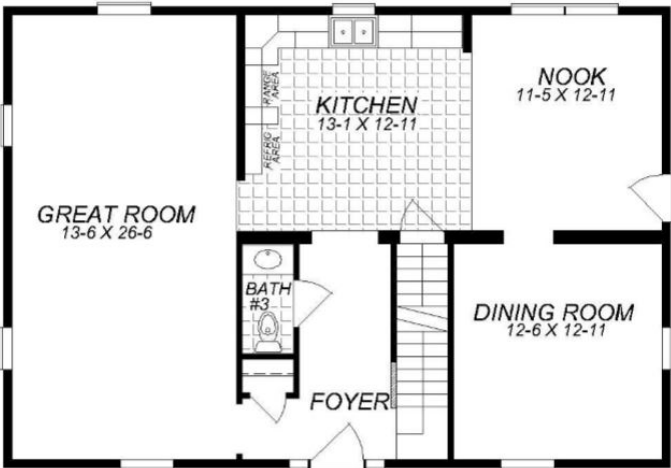
SQ. FT.	2200
BEDROOMS:	4
BATHROOMS:	2.5
LEVELS:	2

### OPTIONAL FEATURES

- ☒ Green Certification
- ☒ Energy Star

This traditional two story home has 4 bedrooms and 2.5 baths is perfect for any family. It has the kitchen/breakfast nook and great room for family fun, with the formal dining room for your entertaining side. The master suite has a large walk in closet, with the master bath having a dual vanity and large linen closet.

### FIRST FLOOR



### SECOND FLOOR





---

### Hi, I'm , your personal Modular Home Consultant

I would be happy to help you with any questions you may have. You can contact me on my direct number at or email me at .