

FAIRMONT. EMH-004

Traditional



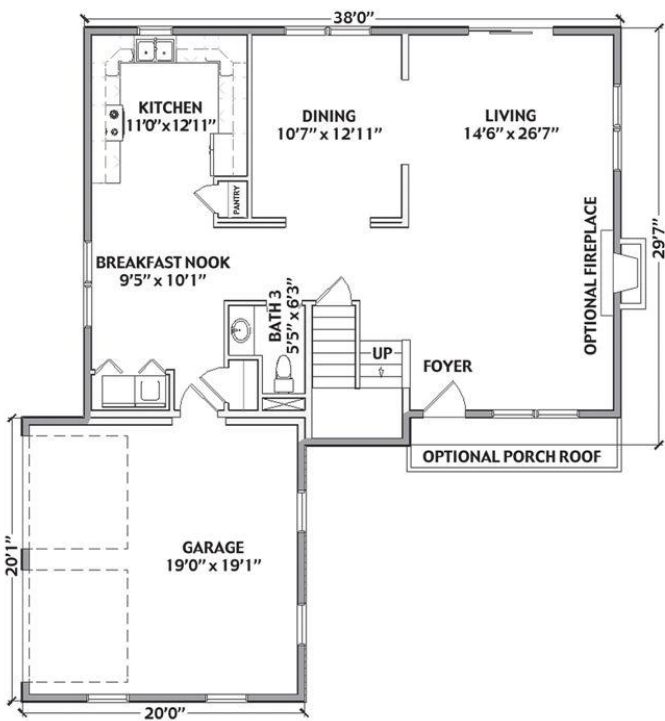
SPECIFICATIONS

SQ. FT.	2487
BEDROOMS:	3
BATHROOMS:	2.5
LEVELS:	2.0

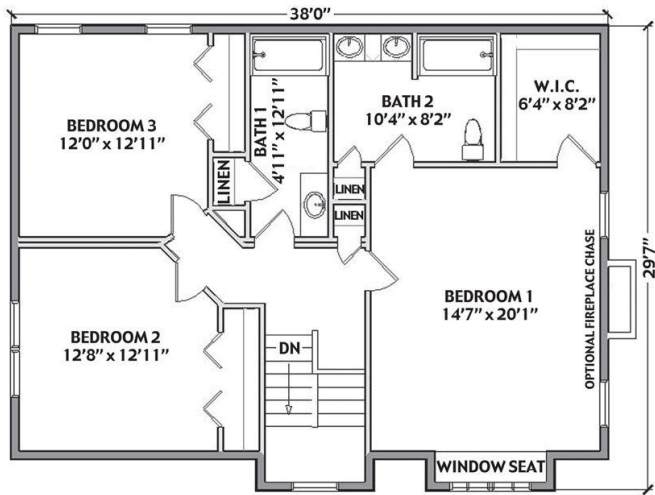
OPTIONAL FEATURES

- ☒ Green Certification
- ☒ Energy Star

FIRST FLOOR



SECOND FLOOR



YOUR
NEW HOME
CONSULTANT

Hi, I'm , your personal Modular Home Consultant

I would be happy to help you with any questions you may have. You can contact me on my direct number at or email me at .