

BEACHERCOMBER. IHU-032

Traditional



SPECIFICATIONS

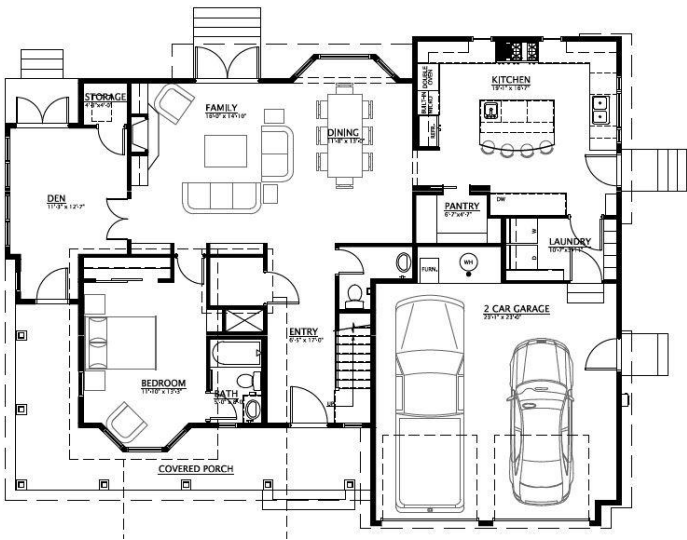
SQ. FT.	2995
BEDROOMS:	4
BATHROOMS:	3.0
LEVELS:	2.0

OPTIONAL FEATURES

- ☒ Green Certification
- ☒ Energy Star
- ☒ Garage Included

Includes: Wrap Around Porch, 2 Car Garage, Sunroom, 2nd Floor Deck Optional: Library, Future Elevator, Fourth Bedroom, Fireplace, Fifth Bedroom, 2 Floor Bar

FIRST FLOOR



OPTIONAL OFFICE



YOUR
NEW HOME
CONSULTANT

Hi, I'm , your personal Modular Home Consultant

I would be happy to help you with any questions you may have. You can contact me on my direct number at or email me at .