

MOUNTIAN VIEW. IHU-031

ContemporaryTraditional



SPECIFICATIONS

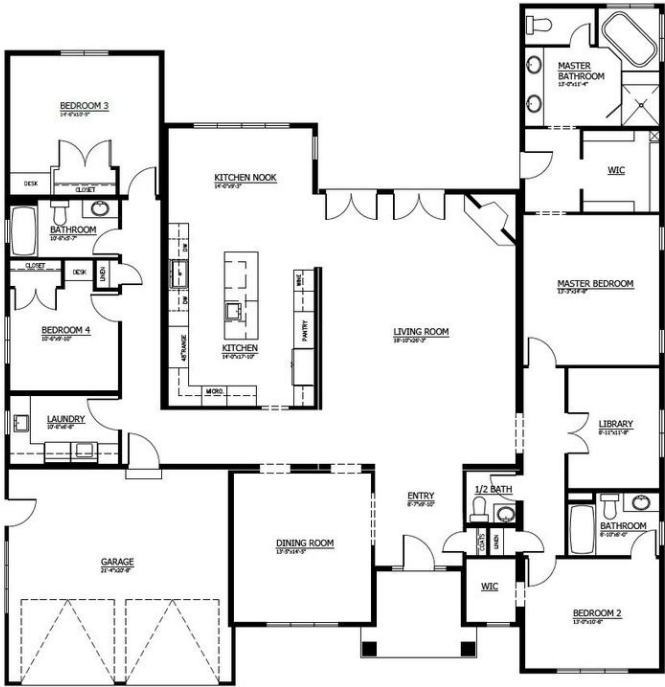
SQ. FT.	2960
BEDROOMS:	4
BATHROOMS:	4.0
LEVELS:	1.0

OPTIONAL FEATURES

☒ Green Certification ☒ Energy Star ☒ Garage Included

Includes: Grid Windows, Ext. Stone, Shingle Siding, Covered Entry, Garage Package Optional: Laundry Cabinets and Sink, Bedroom Desks, Fireplace, Kitchen Prep Sink, Second Dishwasher

FIRST FLOOR



YOUR
NEW HOME
CONSULTANT

Hi, I'm , your personal Modular Home Consultant

I would be happy to help you with any questions you may have. You can contact me on my direct number at or email me at .