

SHENANDOAH. AAI-027

Traditional



SPECIFICATIONS

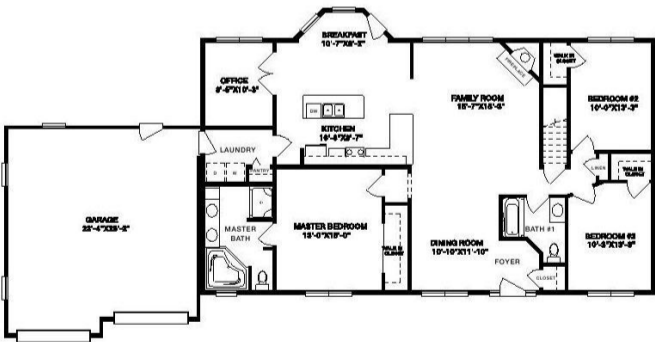
| | |
|------------|------|
| SQ. FT. | 1784 |
| BEDROOMS: | 3 |
| BATHROOMS: | 2.0 |
| LEVELS: | 1.0 |

OPTIONAL FEATURES

- ☒ Green Certification
- ☒ Energy Star
- ☒ Garage
- Included

Just like the famous song, a Shenandoah home will tug at your heartstrings. This spacious ranch is gorgeous inside and out. The fully equipped kitchen offers a center island and extra counter space for maximum ease-of-use while a nearby breakfast room with bay windows promises hours of enjoyment. There’s even a corner office for those times when you need a quiet place to work. For an escape of a different kind, the terrific master bedroom opens to a private master bath with a whirlpool tub and a shower. Both the master bedroom and the two additional bedrooms provide walk-in closets. The Shenandoah also supplies another full bath, a laundry room, a two-car garage, a front foyer and extra closet space. An optional kitchen layout is available.

FIRST FLOOR



OPTIONAL KITCHEN



YOUR
NEW HOME
CONSULTANT



Hi, I'm Consultant Sales, your personal Modular Home Consultant

I would be happy to help you with any questions you may have. You can contact me on my direct number at **Not Available** or email me at contact@expressmodular.com.