



SPECIFICATIONS

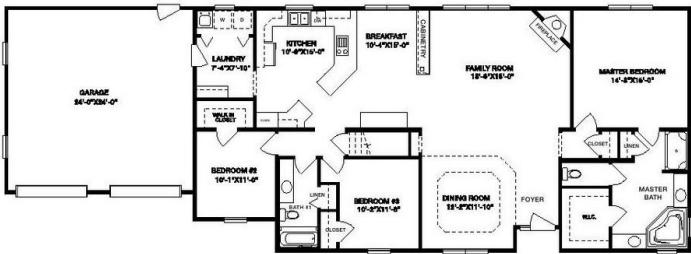
SQ. FT.	1953
BEDROOMS:	3
BATHROOMS:	2.0
LEVELS:	1.0

OPTIONAL FEATURES

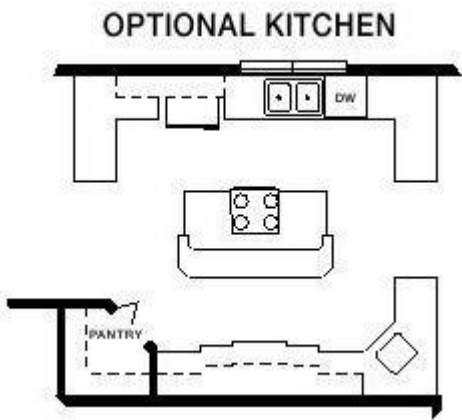
- ☒ Green Certification
- ☒ Energy Star
- ☒ Garage
- Included

The fabulous features of the Rockefeller plan just might make you feel like a member of that famous family. The master bedroom suite offers unbounded amenities, including a great walk-in closet, linen closet, and inviting bath with a whirlpool or soaking tub, shower, and separate sinks. Another closet is conveniently close. The other two bedrooms are supremely size and flank a full bath that provides another linen closet. The family room is a masterpiece in design, with a corner fireplace and built-in cabinetry. The superior kitchen features an attractive breakfast nook and wide peninsula counter with an extra large cooktop. An optional kitchen layout is available. The Rockefeller comes with a two-car garage, front foyer, formal dining room and considerable laundry room.

FIRST FLOOR



OPTIONAL KITCHEN



YOUR
NEW HOME
CONSULTANT

Hi, I'm , your personal Modular Home Consultant

I would be happy to help you with any questions you may have. You can contact me on my direct number at or email me at .