

RANDOLPH. AAI-025

Traditional



SPECIFICATIONS

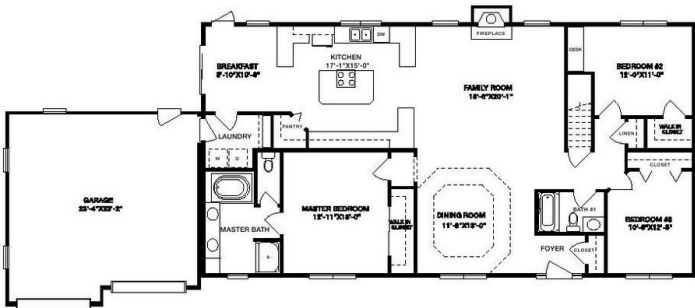
SQ. FT.	1922
BEDROOMS:	3
BATHROOMS:	2.0
LEVELS:	1.0

OPTIONAL FEATURES

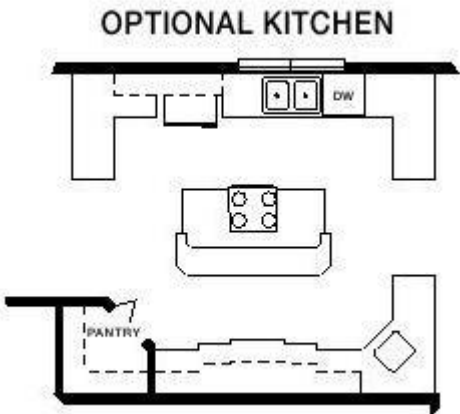
- ☒ Green Certification
- ☒ Energy Star
- ☒ Garage Included

The understated grandeur of the Randolph plan is apparent once you set foot in the front foyer. Imagine candle-lit dinners in the gracious formal dining room, or having family and friends over for a special celebration in the comprehensive family room with an attractive fireplace. Entertaining is easy thanks to the enormous kitchen, complete with a center island that offers wonderful counter space. The Randolph kitchen affords plenty of cabinet space and a generous pantry, too. An optional kitchen layout is also available. A neat breakfast room is sure to provide many pleasant times. When it's time for some privacy, the master bedroom offers indulgences galore, with a walk-in closet and private master bath with a whirlpool or soaking tub, shower and dual sinks. Rounding out the Randolph's features are two additional sizable bedrooms, another full bath, a two-car garage, a laundry room and extra closet space.

FIRST FLOOR



OPTIONAL KITCHEN



YOUR
NEW HOME
CONSULTANT

Hi, I'm , your personal Modular Home Consultant

I would be happy to help you with any questions you may have. You can contact me on my direct number at or email me at .