



SPECIFICATIONS

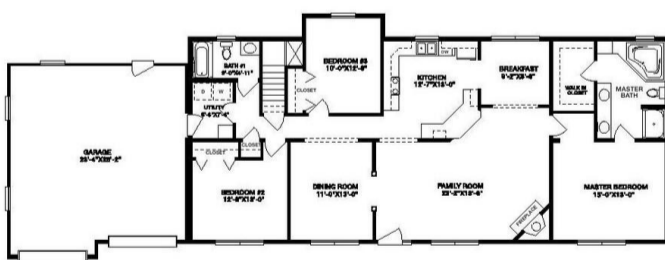
SQ. FT.	1796
BEDROOMS:	3
BATHROOMS:	2.0
LEVELS:	1.0

OPTIONAL FEATURES

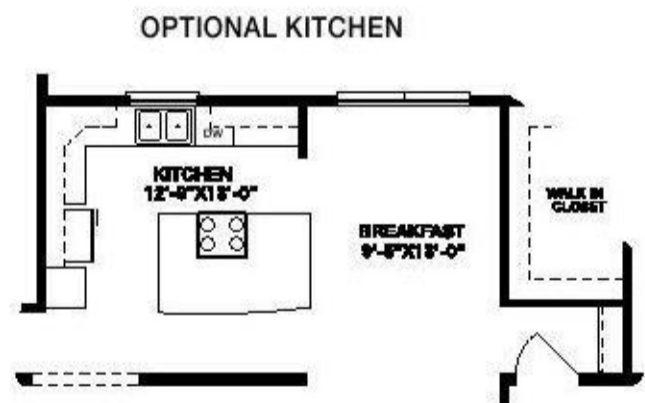
- Green Certification
 - Energy Star
 - Garage
- Included

The delightful Onieda plan gives you everything you need for an outstanding lifestyle. Start with the glorious family room, perfect for any occasion and graced with a corner fireplace. A wide counter between the kitchen and family room, a terrific formal dining room and cozy breakfast room add to Onieda's tantalizing possibilities. An optional kitchen layout expands the breakfast room and adds a center kitchen island. The ambitious master bedroom affords a private retreat made all the more inviting by a grand walk-in closet and soothing master bath complete with shower and whirlpool tub. The Onieda also features a two-car garage, two additional remarkable bedrooms, another full bath and a laundry/utility room.

FIRST FLOOR



OPTIONAL KITCHEN



YOUR
NEW HOME
CONSULTANT



Hi, I'm , your personal Modular Home Consultant

I would be happy to help you with any questions you may have. You can contact me on my direct number at or email me at .

