

# BUTTONWOOD. AAI-005

Traditional



### SPECIFICATIONS

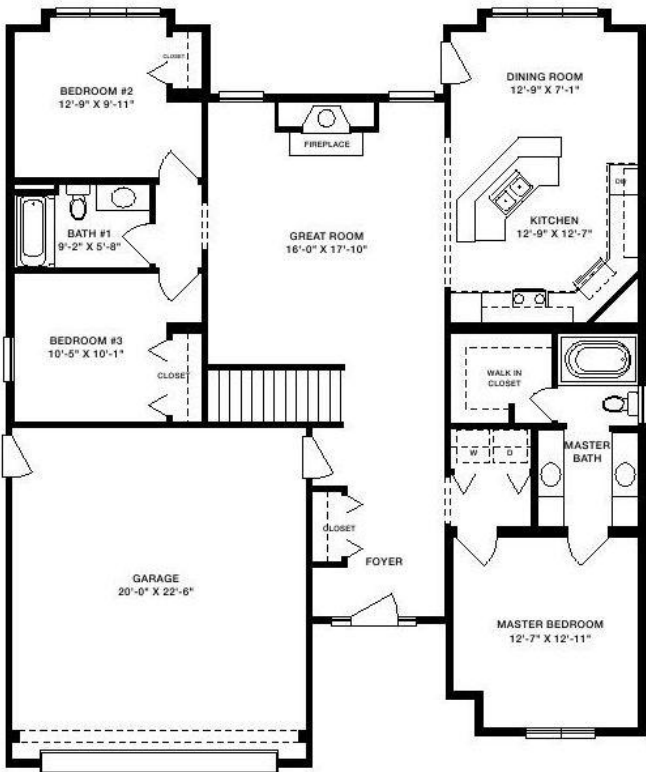
SQ. FT.	1529
BEDROOMS:	3
BATHROOMS:	2.0
LEVELS:	1.0

### OPTIONAL FEATURES

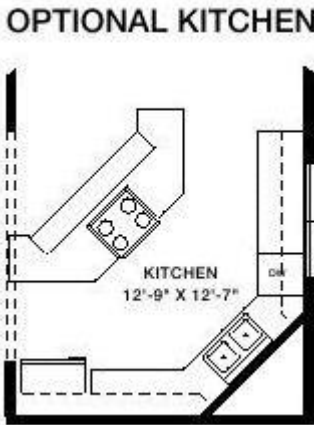
- ☒ Green Certification
- ☒ Energy Star
- ☒ Garage
- Included

An expansive great room is just one of the special features of the Buttonwood plan. Accented by a fireplace, it's flanked by a formal dining room and fully equipped kitchen, making entertaining a snap. Tucked away in its own corner of the house, the master bedroom opens to a sublime master bath and walk-in closet. A door leading directly to the laundry room provides the ultimate in practicality. Two additional bedrooms feature choice closet space and share a full bath. Rounding out the Buttonwood's features are a full garage, walk-in foyer and optional layouts for the kitchen and master bath.

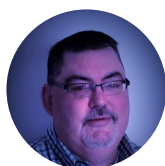
### FIRST FLOOR



### OPTIONAL KITCHEN



YOUR  
NEW HOME  
CONSULTANT



**Hi, I'm David Lipa, your personal Modular Home Consultant**

I would be happy to help you with any questions you may have. You can contact me on my direct number at **(877) 419-1478** or email me at

**[David.Lippa@impresamodular.com](mailto:David.Lippa@impresamodular.com)**.