

# WHITE SPRINGS . ICH-149

Traditional



## SPECIFICATIONS

SQ. FT.	2812
BEDROOMS:	3
BATHROOMS:	2.5
LEVELS:	2

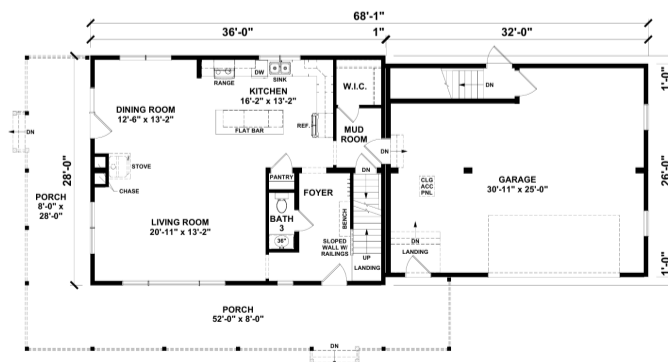
## OPTIONAL FEATURES

- Green Certification
- Energy Star

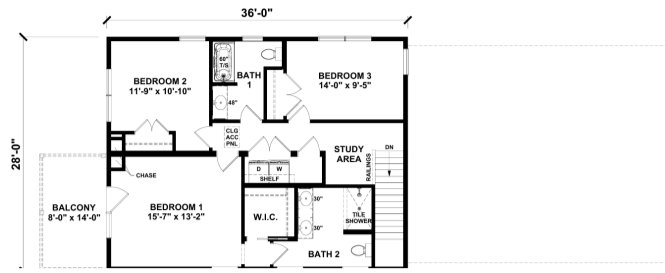
Included: 9'-0" ceilings on first floor, windows with black exterior and white interior, upgraded Craftsman II trim package, stairs with oak treads and white risers, Hanstone Quartz kitchen countertop

Onsite by Others: Appliances not included, decks and porches onsite by others, bath 2 has rough plumbing only - all cabinets, countertops, fixtures, and bath unit are onsite for bath 2

## FIRST FLOOR



**SECOND FLOOR**



**YOUR  
NEW HOME  
CONSULTANT**



**Hi, I'm , your personal Modular Home Consultant**

I would be happy to help you with any questions you may have. You can contact me on my direct number at or email me at .

