

SOUTHWIND II . HEC-023

Traditional



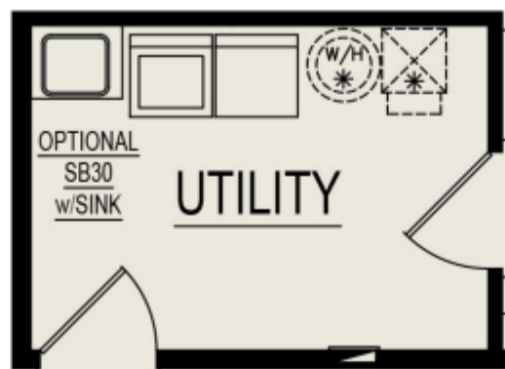
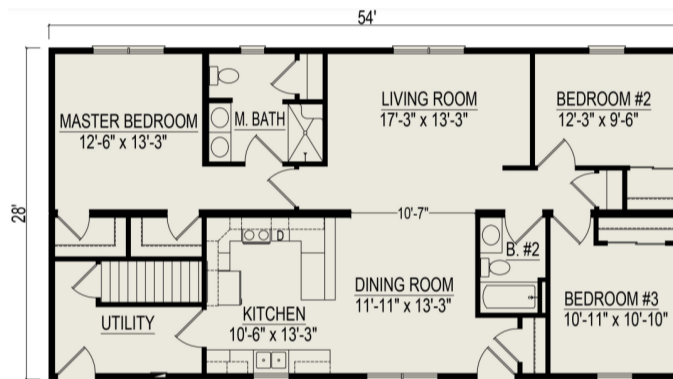
SPECIFICATIONS

SQ. FT.	1512
BEDROOMS:	3
BATHROOMS:	2
LEVELS:	1

OPTIONAL FEATURES

- Green Certification
- Energy Star

FIRST FLOOR



YOUR
NEW HOME
CONSULTANT



Hi, I'm , your personal Modular Home Consultant

I would be happy to help you with any questions you may have. You can contact me on my direct number at or email me at .

