

# DUBLIN II . RHI-059

Traditional

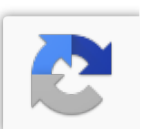


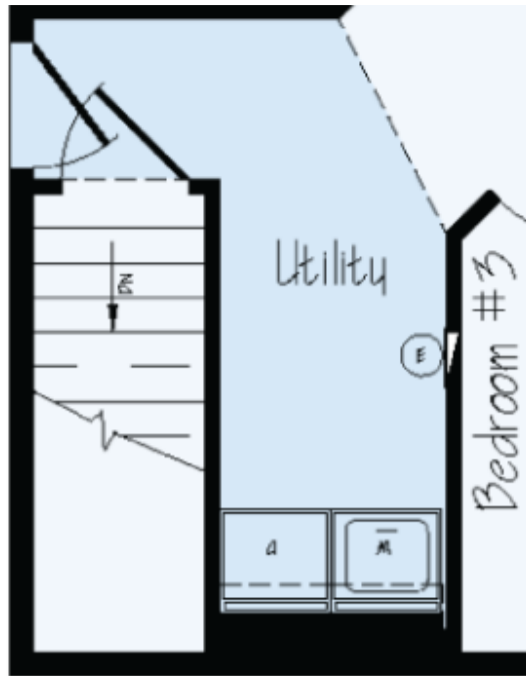
## SPECIFICATIONS

SQ. FT.	2010
BEDROOMS:	3
BATHROOMS:	2
LEVELS:	1

## OPTIONAL FEATURES

- Green Certification
- Energy Star





YOUR  
NEW HOME  
CONSULTANT



Hi, I'm , your personal Modular Home Consultant

I would be happy to help you with any questions you may have. You can contact me on my direct number at or email me at .

