



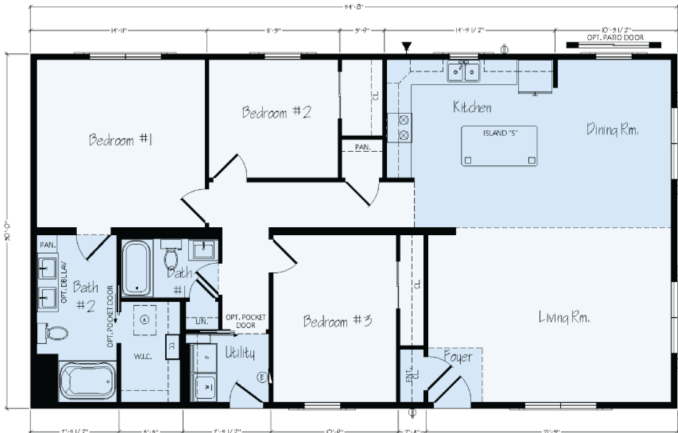
SPECIFICATIONS

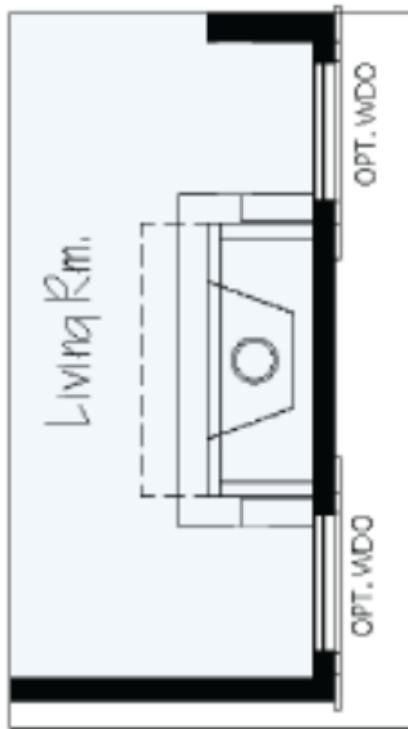
SQ. FT.	1640
BEDROOMS:	3
BATHROOMS:	2
LEVELS:	1

OPTIONAL FEATURES

- ☒ Green Certification
- ☒ Energy Star

FIRST FLOOR





YOUR  
NEW HOME  
CONSULTANT



**Hi, I'm Justin Bryant, your personal Modular Home Consultant**

I would be happy to help you with any questions you may have. You can contact me on my direct number at **(877) 410-6334** or email me at [justin.bryant@impresamodular.com](mailto:justin.bryant@impresamodular.com).