

WILLOW. HBS-027

Ranch



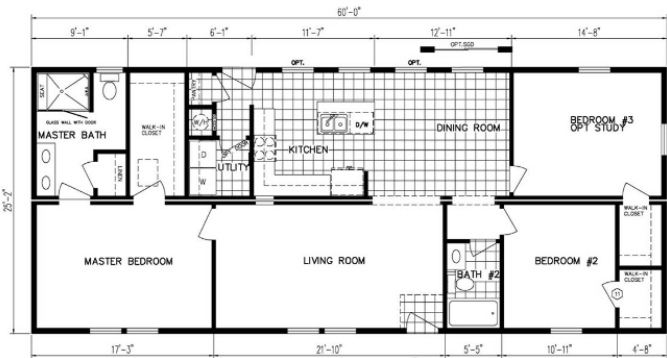
SPECIFICATIONS

SQ. FT.	1510
BEDROOMS:	3
BATHROOMS:	2
LEVELS:	1

OPTIONAL FEATURES

- ☒ Green Certification
- ☒ Energy Star

FIRST FLOOR



YOUR
NEW HOME
CONSULTANT



Hi, I'm Chris Runyan, your personal Modular Home Consultant

I would be happy to help you with any questions you may have. You can contact me on my direct number at **(877) 419-9858** or email me at chris.runyan@impresamodular.com.