



SPECIFICATIONS

SQ. FT.	1656
BEDROOMS:	3
BATHROOMS:	2
LEVELS:	1

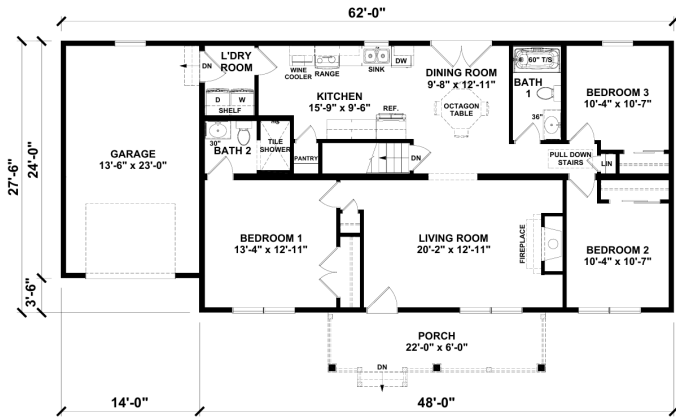
OPTIONAL FEATURES

- ☒ Green Certification
- ☒ Energy Star
- ☒ Garage
- Included

Upgrades Included: 1 car garage included, LVT flooring throughout, painted kitchen cabinets, laminate kitchen and bathroom cabinets, stainless steel appliance package included, gas furnace included, gas hot water heater included

Onsite by Others: Porch onsite by others

FIRST FLOOR





Hi, I'm , your personal modular home consultant

I would be happy to help you with any questions you may have. You can contact me on my direct number at or email me at .