

# MIDWAY. ICH-119

Traditional



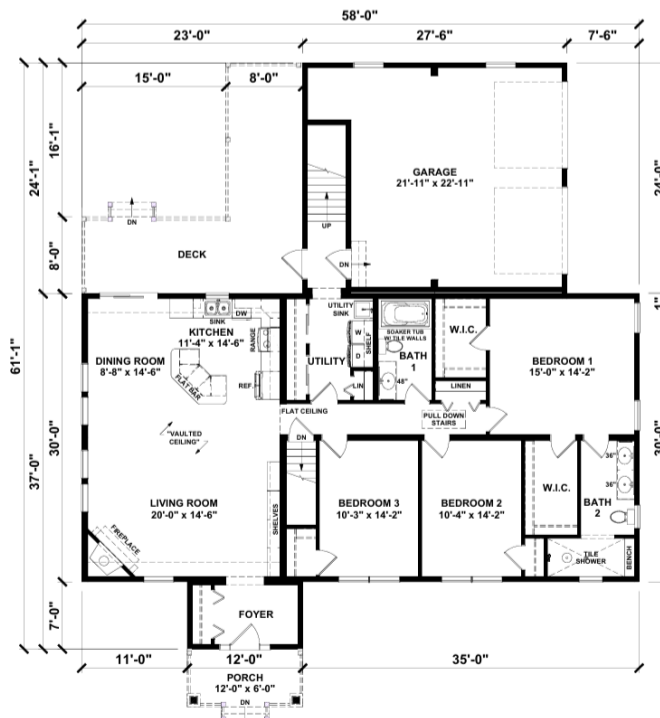
## SPECIFICATIONS

SQ. FT.	2999
BEDROOMS:	3
BATHROOMS:	2.5
LEVELS:	1.5

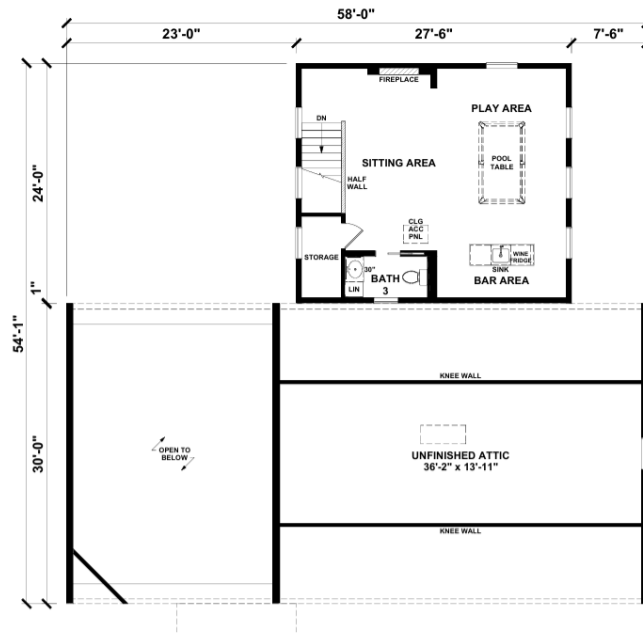
## OPTIONAL FEATURES

- Green Certification
- Energy Star

## FIRST FLOOR



## SUGGESTED SECOND FLOOR



YOUR  
NEW HOME  
CONSULTANT



**Hi, I'm Justin Bryant, your personal Modular Home Consultant**

I would be happy to help you with any questions you may have. You can contact me on my direct number at **(877) 410-6334** or email me at [justin.bryant@impresamodular.com](mailto:justin.bryant@impresamodular.com).