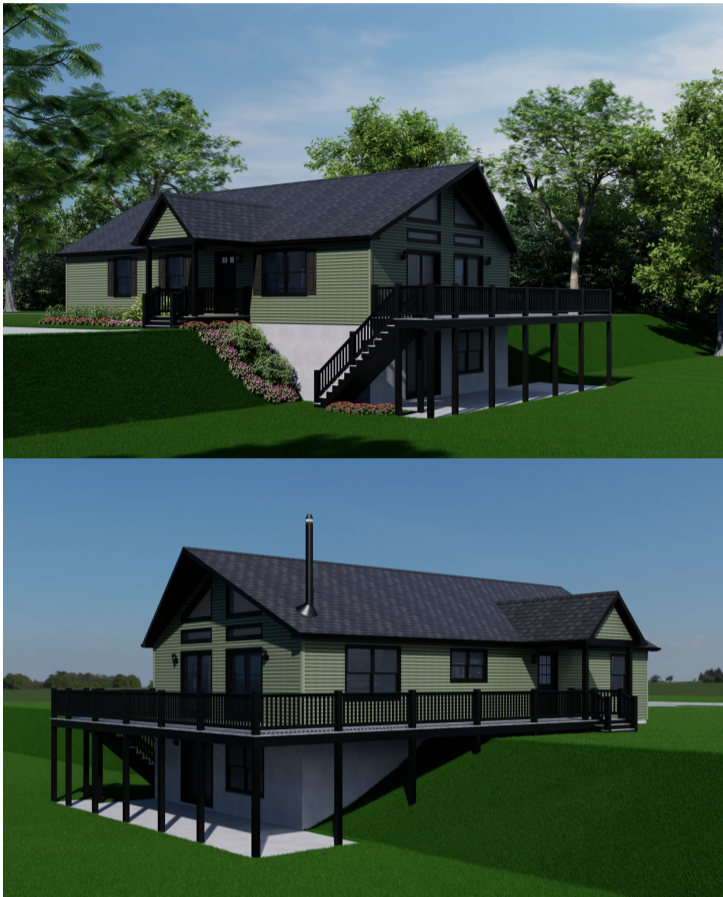


CEDAR KEY . ICH-116

Traditional



SPECIFICATIONS

SQ. FT.	1430
BEDROOMS:	2
BATHROOMS:	2
LEVELS:	1

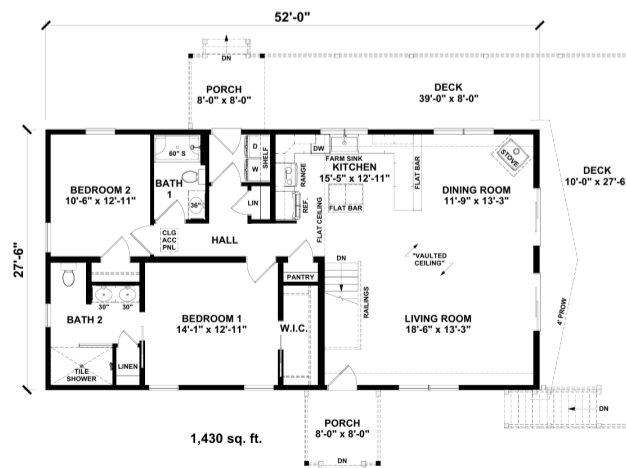
OPTIONAL FEATURES

- Green Certification
- Energy Star

Upgrades Included: LVT throughout, painted kitchen cabinets, quartz countertop, Black Andersen windows, oak bathroom vanities

Onsite by Others: Decks and porches, appliances

FIRST FLOOR



YOUR
NEW HOME
CONSULTANT



Hi, I'm , your personal Modular Home Consultant

I would be happy to help you with any questions you may have. You can contact me on my direct number at or email me at .

