

MULBERRY. ICH-016

Traditional



SPECIFICATIONS

SQ. FT.	2984
BEDROOMS:	4
BATHROOMS:	2
LEVELS:	2

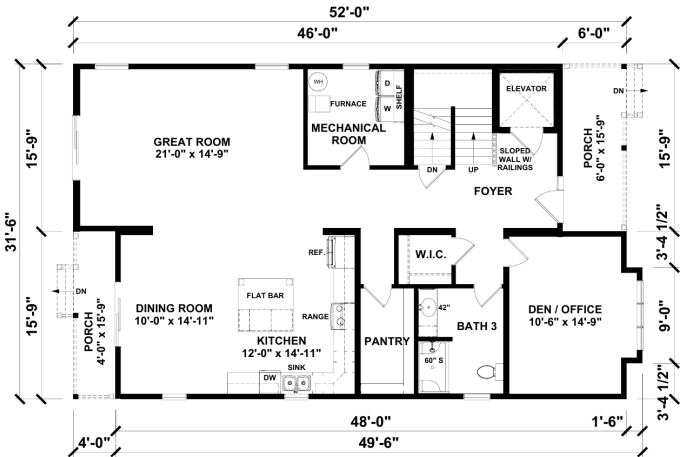
OPTIONAL FEATURES

- ☒ Green Certification
- ☒ Energy Star

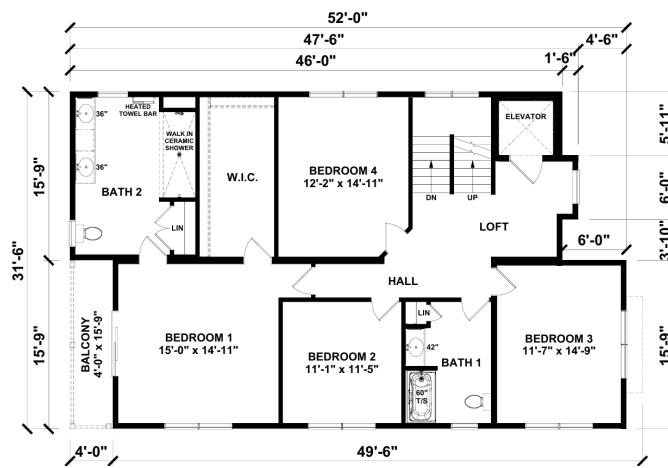
Up grades Included: Painted cabinets in kitchen and bathrooms, LVT throughout, carpet in bedrooms, Oak stairs with white risers, quartz countertop

Onsite by Others: porches and decks not included, appliances onsite by others, master bathroom ceramic floor onsite by others, ceramic tile master bath shower onsite by others (fiberock walls and Schluter floor system included)

FIRST FLOOR



SECOND FLOOR



YOUR
NEW HOME
CONSULTANT



Hi, I'm Justin Bryant, your personal Modular Home Consultant

I would be happy to help you with any questions you may have. You can contact me on my direct number at **(877) 410-6334** or email me at justin.bryant@impresamodular.com.