



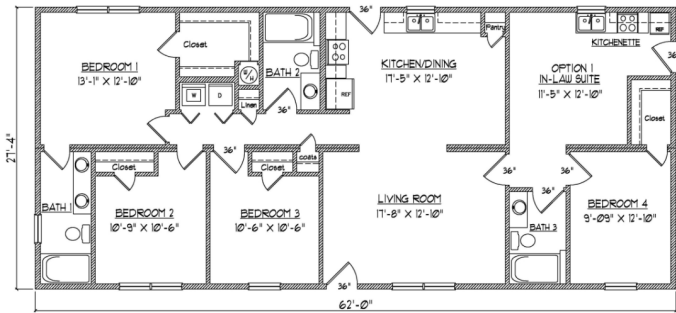
SPECIFICATIONS

SQ. FT.	1640
BEDROOMS:	4
BATHROOMS:	2
LEVELS:	1

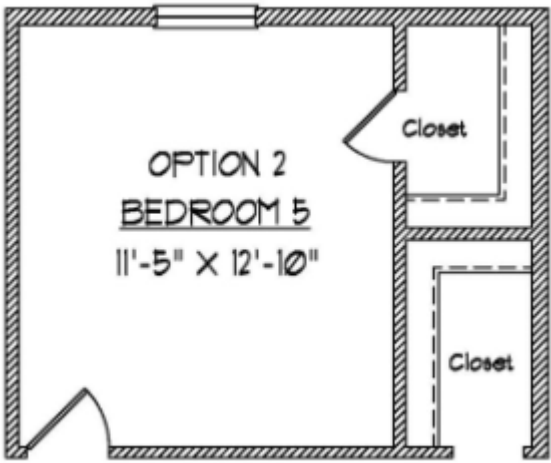
OPTIONAL FEATURES

- ☒ Green Certification
- ☒ Energy Star

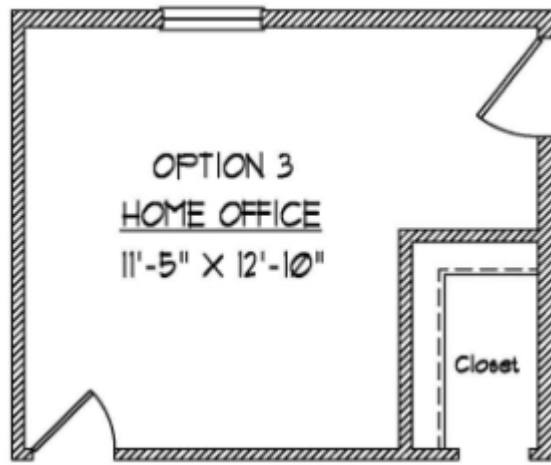
FIRST FLOOR



OPTIONAL 5TH BEDROOM



OPTIONAL HOME OFFICE



YOUR
NEW HOME
CONSULTANT



Hi, I'm Justin Bryant, your personal Modular Home Consultant

I would be happy to help you with any questions you may have. You can contact me on my direct number at **(877) 410-6334** or email me at justin.bryant@impresamodular.com.