

SADDLE RIDGE. RAH-153304-R

Traditional

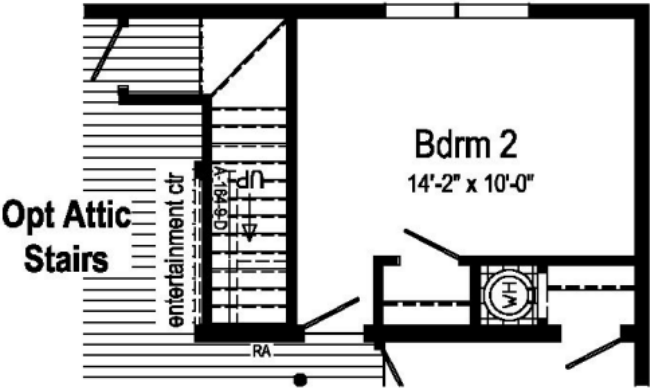


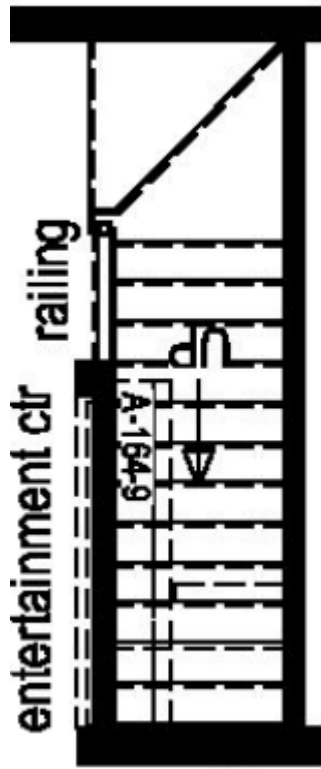
SPECIFICATIONS

SQ. FT.	1673
BEDROOMS:	3
BATHROOMS:	2
LEVELS:	1

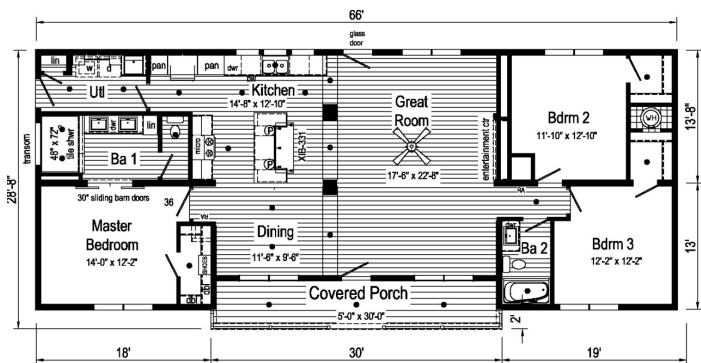
OPTIONAL FEATURES

- ☒ Green Certification
- ☒ Energy Star





FIRST FLOOR



YOUR
NEW HOME
CONSULTANT

Hi, I'm , your personal Modular Home Consultant

I would be happy to help you with any questions you may have. You can contact me on my direct number at or email me at .